



Berger Realty, Inc.  
3160 Asbury Avenue  
Ocean City, NJ 08226  
1-877-237-4371 / 609-399-0076  
info@bergerrealty.com



1021 Route 54, Buena Vista Township, NJ, 08094

Price \$250,000.00

#### PROPERTY DETAILS



|              |         |
|--------------|---------|
| Total Rooms  | 0       |
| Bedrooms     | 0       |
| Baths Full   | 0       |
| Baths Half   | 0       |
| Year Built   |         |
| Type         |         |
| Block Number | 701     |
| Listing #    | 592945  |
| Taxes        | 1337.00 |

#### COMMENTS

*The hard work has already been done here! Approved buildable lot for a 2,300 SqFt building with 30 parking stalls including 5 handicapped stalls! Presenting an exceptional opportunity! Located in the sought-after Buena Vista Township section of Atlantic County, this 9.84+/- acre parcel of commercial land sits within the \"RDR1C\" Rural Development Residence/Commercial d...*

#### PROPERTY FEATURES

#### CONTACT



Ask for Evelyn "Evie" Schweibinz  
Berger Realty Inc  
3160 Asbury Avenue, Ocean City  
Call:  
Email to: [ems@bergerrealty.com](mailto:ems@bergerrealty.com)

Scan to see Property page.



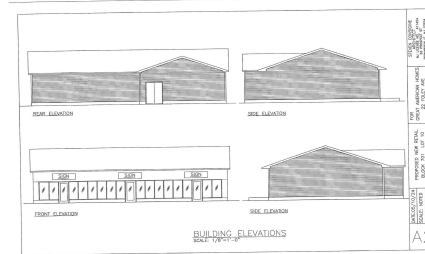
Berger Realty, Inc.  
3160 Asbury Avenue  
Ocean City, NJ 08226  
1-877-237-4371 / 609-399-0076  
info@bergerrealty.com



1021 Route 54, Buena Vista Township, NJ, 08094

Price \$250,000.00

#### PROPERTY DETAILS



|              |         |
|--------------|---------|
| Total Rooms  | 0       |
| Bedrooms     | 0       |
| Baths Full   | 0       |
| Baths Half   | 0       |
| Year Built   |         |
| Type         |         |
| Block Number | 701     |
| Listing #    | 592945  |
| Taxes        | 1337.00 |

#### COMMENTS

*The hard work has already been done here! Approved buildable lot for a 2,300 SqFt building with 30 parking stalls including 5 handicapped stalls! Presenting an exceptional opportunity! Located in the sought-after Buena Vista Township section of Atlantic County, this 9.84+/- acre parcel of commercial land sits within the \"RDR1C\" Rural Development Residence/Commercial d...*

#### PROPERTY FEATURES

#### CONTACT



Ask for Evelyn "Evie" Schweibinz  
Berger Realty Inc  
3160 Asbury Avenue, Ocean City  
Call:  
Email to: [ems@bergerrealty.com](mailto:ems@bergerrealty.com)

Scan to see Property page.

