



Berger Realty, Inc.
3160 Asbury Avenue
Ocean City, NJ 08226
1-877-237-4371 / 609-399-0076
info@bergerrealty.com



417 Madison, Woodbine Borough, NJ, 08270

Price \$395,000.00



PROPERTY DETAILS

Total Rooms	
Bedrooms	0
Baths Full	0
Baths Half	0
Year Built	
Type	
Block Number	2
Listing #	592837
Taxes	4662.00

COMMENTS

INVESTMENT SALE - REAL ESTATE ONLY. 3 existing tenanted buildings. Total area approximately 8,400+/- sf. Long time tenant with a 5 year lease option. Fully improved on 0.63+/- acres. 175+/- feet of street frontage. Ample parking on site. Building for production ad storage with a drive in loading door. Near Sea Isle ice production facility. Rte. 550 connects direct...

PROPERTY FEATURES

CONTACT



Ask for Graham Ginn
Berger Realty Inc
3160 Asbury Avenue, Ocean City
Call: 609-602-4884
Email to: gmg@bergerrealty.com
https://www.ocnj.com

Scan to see Property page.

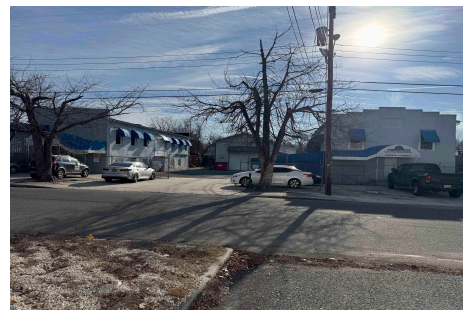


Berger Realty, Inc.
3160 Asbury Avenue
Ocean City, NJ 08226
1-877-237-4371 / 609-399-0076
info@bergerrealty.com



417 Madison, Woodbine Borough, NJ, 08270

Price \$395,000.00



PROPERTY DETAILS

Total Rooms	
Bedrooms	0
Baths Full	0
Baths Half	0
Year Built	
Type	
Block Number	2
Listing #	592837
Taxes	4662.00

COMMENTS

INVESTMENT SALE - REAL ESTATE ONLY. 3 existing tenanted buildings. Total area approximately 8,400+/- sf. Long time tenant with a 5 year lease option. Fully improved on 0.63+/- acres. 175+/- feet of street frontage. Ample parking on site. Building for production ad storage with a drive in loading door. Near Sea Isle ice production facility. Rte. 550 connects direct...

PROPERTY FEATURES

CONTACT



Ask for Graham Ginn
Berger Realty Inc
3160 Asbury Avenue, Ocean City
Call: 609-602-4884
Email to: gmg@bergerrealty.com
https://www.ocnj.com

Scan to see Property page.

