

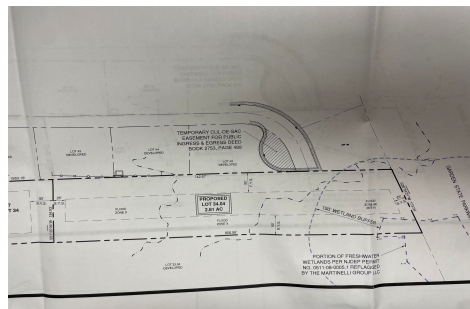


Berger Realty, Inc.
3160 Asbury Avenue
Ocean City, NJ 08226
1-877-237-4371 / 609-399-0076
info@bergerrealty.com



24 Timber Lane, Marmora, NJ, 08223

Price \$285,000.00



PROPERTY DETAILS

Total Rooms	0
Bedrooms	0
Baths Full	0
Baths Half	0
Year Built	
Type	
Block Number	598
Listing #	592390
Taxes	

COMMENTS

OVER 2.5 ACRES! Rare opportunity to own a buildable lot in the highly sought after Marmora section of Upper Township. Total of 2.83 acres. Upper Township and OCHS school district. Cul-De-Sac location, and only 5 minutes to Ocean City beaches and boardwalk....

PROPERTY FEATURES

CONTACT



Ask for Ken Sedberry Jr.
Berger Realty Inc
3160 Asbury Avenue, Ocean City
Call: 609-703-2930
Email to: ksj@bergerrealty.com

Scan to see Property page.

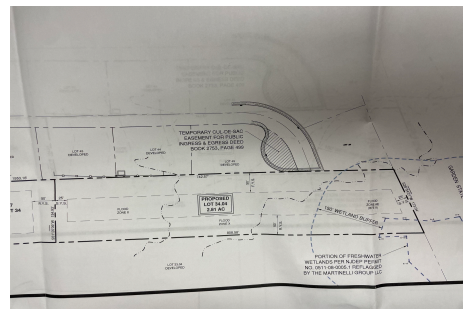


Berger Realty, Inc.
3160 Asbury Avenue
Ocean City, NJ 08226
1-877-237-4371 / 609-399-0076
info@bergerrealty.com



24 Timber Lane, Marmora, NJ, 08223

Price \$285,000.00



PROPERTY DETAILS

Total Rooms	0
Bedrooms	0
Baths Full	0
Baths Half	0
Year Built	
Type	
Block Number	598
Listing #	592390
Taxes	

COMMENTS

OVER 2.5 ACRES! Rare opportunity to own a buildable lot in the highly sought after Marmora section of Upper Township. Total of 2.83 acres. Upper Township and OCHS school district. Cul-De-Sac location, and only 5 minutes to Ocean City beaches and boardwalk....

PROPERTY FEATURES

CONTACT



Ask for Ken Sedberry Jr.
Berger Realty Inc
3160 Asbury Avenue, Ocean City
Call: 609-703-2930
Email to: ksj@bergerrealty.com

Scan to see Property page.

