



Berger Realty, Inc.  
3160 Asbury Avenue  
Ocean City, NJ 08226  
1-877-237-4371 / 609-399-0076  
info@bergerrealty.com



1916 Riverside, Atlantic City, NJ, 08401

Price \$129,000.00



#### PROPERTY DETAILS

Total Rooms	
Bedrooms	0
Baths Full	0
Baths Half	0
Year Built	
Type	
Block Number	670
Listing #	592201
Taxes	2323.00

#### COMMENTS

*On The Water in Desirable Venice Park! Updated Bulkhead and the house next door is also on the market. Why not buy both and Have a Big beautiful home on the water!! Venice Park is the Gateway to AC!!!!...*

#### PROPERTY FEATURES

#### CONTACT



Ask for John Clarke  
Berger Realty Inc  
3160 Asbury Avenue, Ocean City  
Call: 609-289-6111  
Email to: jwc@bergerrealty.com

Scan to see Property page.

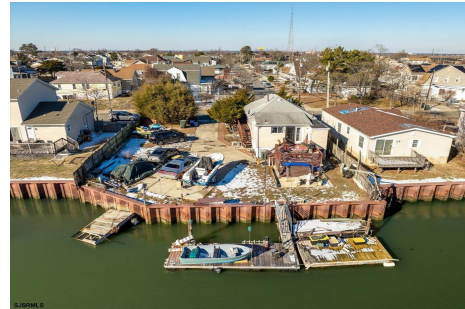


Berger Realty, Inc.  
3160 Asbury Avenue  
Ocean City, NJ 08226  
1-877-237-4371 / 609-399-0076  
info@bergerrealty.com



1916 Riverside, Atlantic City, NJ, 08401

Price \$129,000.00



#### PROPERTY DETAILS

Total Rooms	
Bedrooms	0
Baths Full	0
Baths Half	0
Year Built	
Type	
Block Number	670
Listing #	592201
Taxes	2323.00

#### COMMENTS

*On The Water in Desirable Venice Park! Updated Bulkhead and the house next door is also on the market. Why not buy both and Have a Big beautiful home on the water!! Venice Park is the Gateway to AC!!!!...*

#### PROPERTY FEATURES

#### CONTACT



Ask for John Clarke  
Berger Realty Inc  
3160 Asbury Avenue, Ocean City  
Call: 609-289-6111  
Email to: jwc@bergerrealty.com

Scan to see Property page.

