



Berger Realty, Inc.
3160 Asbury Avenue
Ocean City, NJ 08226
1-877-237-4371 / 609-399-0076
info@bergerrealty.com



871 Corkery, Washington Township, NJ, 08094

Price \$899,900.00

PROPERTY DETAILS



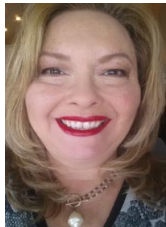
Total Rooms	
Bedrooms	0
Baths Full	0
Baths Half	0
Year Built	
Type	
Block Number	11002
Listing #	592090
Taxes	9942.00

COMMENTS

Prime Investment Opportunity – Cleared 10.2 Acres with 4-Family Property! Rare chance to own 10.2 acres in a desirable location, featuring a fully rented 4-family building (month-to-month leases). Includes two 1-bedroom units and two 2-bedroom units, all well-maintained with a newer roof and water softener. Surrounded by single-family homes and close to Philadelphia, Glo...

PROPERTY FEATURES

CONTACT



Ask for Theresa Maina
Berger Realty Inc
3160 Asbury Avenue, Ocean City
Call: 609-703-7725
Email to: tam@bergerrealty.com

Scan to see Property page.



Berger Realty, Inc.
3160 Asbury Avenue
Ocean City, NJ 08226
1-877-237-4371 / 609-399-0076
info@bergerrealty.com



871 Corkery, Washington Township, NJ, 08094

Price \$899,900.00

PROPERTY DETAILS



Total Rooms	
Bedrooms	0
Baths Full	0
Baths Half	0
Year Built	
Type	
Block Number	11002
Listing #	592090
Taxes	9942.00

COMMENTS

Prime Investment Opportunity – Cleared 10.2 Acres with 4-Family Property! Rare chance to own 10.2 acres in a desirable location, featuring a fully rented 4-family building (month-to-month leases). Includes two 1-bedroom units and two 2-bedroom units, all well-maintained with a newer roof and water softener. Surrounded by single-family homes and close to Philadelphia, Glo...

PROPERTY FEATURES

CONTACT



Ask for Theresa Maina
Berger Realty Inc
3160 Asbury Avenue, Ocean City
Call: 609-703-7725
Email to: tam@bergerrealty.com

Scan to see Property page.

