



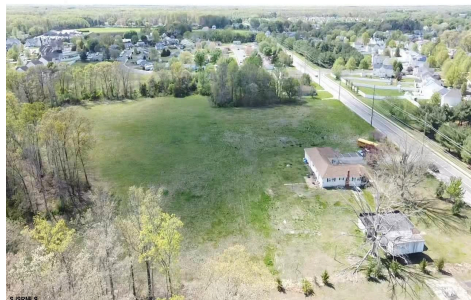
Berger Realty, Inc.  
3160 Asbury Avenue  
Ocean City, NJ 08226  
1-877-237-4371 / 609-399-0076  
info@bergerrealty.com



871 Corkery, Washington Township, NJ, 08094

Price \$899,900.00

#### PROPERTY DETAILS



Total Rooms	
Bedrooms	0
Baths Full	0
Baths Half	0
Year Built	
Type	
Block Number	11002
Listing #	592090
Taxes	9942.00

#### COMMENTS

*Prime Investment Opportunity – Multi-Family Property on 10.2 Acres! A builder's dream and an excellent investment opportunity, this 4-family residential property sits on 10.2 acres in a high-demand area with strong rental income potential. Property Features: Building Type: 4-Family Residential Total Land: 10.2 Acres Units: 4 Fully Rented (Month-to-Month Lease) Unit B...*

#### PROPERTY FEATURES

#### CONTACT



Ask for Margarita Kobilianets  
Berger Realty Inc  
3160 Asbury Avenue, Ocean City  
Call: 609-674-3417  
Email to: mak@bergerrealty.com

Scan to see Property page.



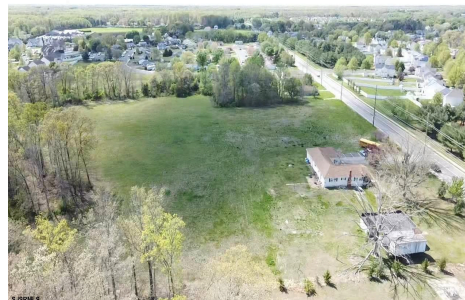
Berger Realty, Inc.  
3160 Asbury Avenue  
Ocean City, NJ 08226  
1-877-237-4371 / 609-399-0076  
info@bergerrealty.com



871 Corkery, Washington Township, NJ, 08094

Price \$899,900.00

#### PROPERTY DETAILS



Total Rooms	
Bedrooms	0
Baths Full	0
Baths Half	0
Year Built	
Type	
Block Number	11002
Listing #	592090
Taxes	9942.00

#### COMMENTS

*Prime Investment Opportunity – Multi-Family Property on 10.2 Acres! A builder's dream and an excellent investment opportunity, this 4-family residential property sits on 10.2 acres in a high-demand area with strong rental income potential. Property Features: Building Type: 4-Family Residential Total Land: 10.2 Acres Units: 4 Fully Rented (Month-to-Month Lease) Unit B...*

#### PROPERTY FEATURES

#### CONTACT



Ask for Margarita Kobilianets  
Berger Realty Inc  
3160 Asbury Avenue, Ocean City  
Call: 609-674-3417  
Email to: mak@bergerrealty.com

Scan to see Property page.

