



Berger Realty, Inc.
3160 Asbury Avenue
Ocean City, NJ 08226
1-877-237-4371 / 609-399-0076
info@bergerrealty.com



370 Berlin Crosskeys, Sicklerville, NJ, 08081

Price \$999,999.00

PROPERTY DETAILS

| | |
|--------------|---------|
| Total Rooms | 0 |
| Bedrooms | 0 |
| Baths Full | 0 |
| Baths Half | 0 |
| Year Built | |
| Type | |
| Block Number | 303 |
| Listing # | 591992 |
| Taxes | 6063.00 |

COMMENTS

2.779 acre commercially zoned property with 150 feet of road frontage on Berlin Crosskeys Road. Industrial/warehouse uses would require a variance. Great location located across from Camden County Technical School. 2.5 miles from the Atlantic City Expressway conveniently located near both Philadelphia and Atlantic City. Property has been cleared and is ready for devel...

PROPERTY FEATURES

CONTACT



Ask for Joyce McMahon
Berger Realty Inc
3160 Asbury Avenue, Ocean City
Call:
Email to: jmm@bergerrealty.com

Scan to see Property page.



Berger Realty, Inc.
3160 Asbury Avenue
Ocean City, NJ 08226
1-877-237-4371 / 609-399-0076
info@bergerrealty.com



370 Berlin Crosskeys, Sicklerville, NJ, 08081

Price \$999,999.00

PROPERTY DETAILS

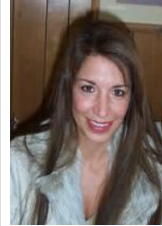
| | |
|--------------|---------|
| Total Rooms | 0 |
| Bedrooms | 0 |
| Baths Full | 0 |
| Baths Half | 0 |
| Year Built | |
| Type | |
| Block Number | 303 |
| Listing # | 591992 |
| Taxes | 6063.00 |

COMMENTS

2.779 acre commercially zoned property with 150 feet of road frontage on Berlin Crosskeys Road. Industrial/warehouse uses would require a variance. Great location located across from Camden County Technical School. 2.5 miles from the Atlantic City Expressway conveniently located near both Philadelphia and Atlantic City. Property has been cleared and is ready for devel...

PROPERTY FEATURES

CONTACT



Ask for Joyce McMahon
Berger Realty Inc
3160 Asbury Avenue, Ocean City
Call:
Email to: jmm@bergerrealty.com

Scan to see Property page.

