



Berger Realty, Inc.  
3160 Asbury Avenue  
Ocean City, NJ 08226  
1-877-237-4371 / 609-399-0076  
info@bergerrealty.com



1026 Bartlett Dr, Linwood, NJ, 08221

Price \$739,000.00



#### PROPERTY DETAILS

Total Rooms	7
Bedrooms	4
Baths Full	2
Baths Half	0
Year Built	1960
Type	Single Family
Block Number	81
Listing #	591978
Taxes	10665.00

#### COMMENTS

**WATERFRONT-MEADOWFRONT-SUNSET PARADISE!!!** A rare opportunity in Linwood to create a once in a lifetime estate, while subdividing off an additional oversized buildable waterfront lot. A solid house currently exists, however the inherent value is in the land, location and future potential for development including possible docks directly to Patcong Creek, deep water! While p...

#### PROPERTY FEATURES

Exterior Wood	OutsideFeatures Deck Porch	ParkingGarage None	OtherRooms Dining Room Eat In Kitchen Laundry/Utility Room Library/Study Primary BR on 1st floor Recreation/Family Storage Attic
InteriorFeatures Storage	Basement 6 Ft. or More Head Room Finished Full Heated Inside Entrance Outside Entrance	Heating Oil Solar Tank Above Ground	Cooling Wall Units
HotWater Electric	Water Public	Sewer Public Sewer	

#### CONTACT



Ask for Chris Warren  
Berger Realty Inc  
3160 Asbury Avenue, Ocean City  
Call: 609-432-7694  
Email to: caw@bergerrealty.com

Scan to  Party page.

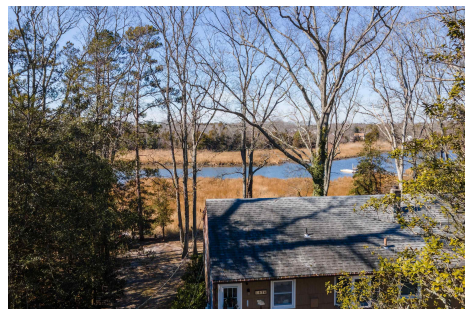


Berger Realty, Inc.  
3160 Asbury Avenue  
Ocean City, NJ 08226  
1-877-237-4371 / 609-399-0076  
info@bergerrealty.com



1026 Bartlett Dr, Linwood, NJ, 08221

Price \$739,000.00



#### PROPERTY DETAILS

Total Rooms	7
Bedrooms	4
Baths Full	2
Baths Half	0
Year Built	1960
Type	Single Family
Block Number	81
Listing #	591978
Taxes	10665.00

#### COMMENTS

**WATERFRONT-MEADOWFRONT-SUNSET PARADISE!!!** A rare opportunity in Linwood to create a once in a lifetime estate, while subdividing off an additional oversized buildable waterfront lot. A solid house currently exists, however the inherent value is in the land, location and future potential for development including possible docks directly to Patcong Creek, deep water! While p...

#### PROPERTY FEATURES

Exterior Wood	OutsideFeatures Deck Porch	ParkingGarage None	OtherRooms Dining Room Eat In Kitchen Laundry/Utility Room Library/Study Primary BR on 1st floor Recreation/Family Storage Attic
InteriorFeatures Storage	Basement 6 Ft. or More Head Room Finished Full Heated Inside Entrance Outside Entrance	Heating Oil Solar Tank Above Ground	Cooling Wall Units
HotWater Electric	Water Public	Sewer Public Sewer	

#### CONTACT



Ask for Chris Warren  
Berger Realty Inc  
3160 Asbury Avenue, Ocean City  
Call: 609-432-7694  
Email to: caw@bergerrealty.com

Scan to  Party page.

