

Berger Realty

Since 1926



Berger Realty, Inc.
3160 Asbury Avenue
Ocean City, NJ 08226
1-877-237-4371 / 609-399-0076
info@bergerrealty.com



897 12th, Hammonton, NJ, 08037

Price \$7,965,000.00

PROPERTY DETAILS



| | |
|--------------|-----------|
| Total Rooms | 0 |
| Bedrooms | 0 |
| Baths Full | 0 |
| Baths Half | 0 |
| Year Built | |
| Type | |
| Block Number | 1101 |
| Listing # | 591888 |
| Taxes | 101824.00 |

COMMENTS

ALERT -- INVESTORS OR LARGE SPACE USERS!! 58,800+- sqft, on 10.75 +- acres at a signalized intersection, just 6/10ths of a mile from AC Expressway Exit #28! The "897" building offers 28,800 sqft of existing Office and Warehouse Space that can occupied early Spring 2025! Ample car and truck parking on-site, and multiple tailgate and drive-in loading doors. Monument signa...

PROPERTY FEATURES

| | | | |
|-------------------|--------------|-------------|-------------|
| ParkingGarage | Basement | Heating | Cooling |
| 11 or More Spaces | Slab | Forced Air | Central |
| Off Street | | Multi-Zoned | Multi-Zoned |
| Paved | | | |
| Water | Sewer | | |
| Public | Public Sewer | | |

CONTACT



Ask for Sara Varani
Berger Realty Inc
3160 Asbury Avenue, Ocean City
Call:
Email to: sev@bergerrealty.com

Scan to see Property page.



Berger Realty

Since 1926



Berger Realty, Inc.
3160 Asbury Avenue
Ocean City, NJ 08226
1-877-237-4371 / 609-399-0076
info@bergerrealty.com



897 12th, Hammonton, NJ, 08037

Price \$7,965,000.00

PROPERTY DETAILS



| | |
|--------------|-----------|
| Total Rooms | 0 |
| Bedrooms | 0 |
| Baths Full | 0 |
| Baths Half | 0 |
| Year Built | |
| Type | |
| Block Number | 1101 |
| Listing # | 591888 |
| Taxes | 101824.00 |

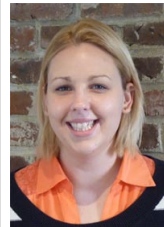
COMMENTS

ALERT -- INVESTORS OR LARGE SPACE USERS!! 58,800+- sqft, on 10.75 +- acres at a signalized intersection, just 6/10ths of a mile from AC Expressway Exit #28! The "897" building offers 28,800 sqft of existing Office and Warehouse Space that can occupied early Spring 2025! Ample car and truck parking on-site, and multiple tailgate and drive-in loading doors. Monument signa...

PROPERTY FEATURES

| | | | |
|-------------------|--------------|-------------|-------------|
| ParkingGarage | Basement | Heating | Cooling |
| 11 or More Spaces | Slab | Forced Air | Central |
| Off Street | | Multi-Zoned | Multi-Zoned |
| Paved | | | |
| Water | Sewer | | |
| Public | Public Sewer | | |

CONTACT



Ask for Sara Varani
Berger Realty Inc
3160 Asbury Avenue, Ocean City
Call:
Email to: sev@bergerrealty.com

Scan to see Property page.

