



Berger Realty, Inc.
3160 Asbury Avenue
Ocean City, NJ 08226
1-877-237-4371 / 609-399-0076
info@bergerrealty.com



2424 Cedar St, Millville, NJ, 08332

Price \$799,000.00



PROPERTY DETAILS

Total Rooms	
Bedrooms	0
Baths Full	0
Baths Half	0
Year Built	
Type	
Block Number	52
Listing #	591687
Taxes	6013.00

COMMENTS

Discover a prime investment opportunity with this 53-acre industrial land at 2424 Cedar Street, Millville, New Jersey. Boasting a strategic location near key landmarks such as the Millville Airport, Millville Motorsports Raceway, and direct access to Route 55, this property provides unparalleled connectivity to major transportation networks, including the vibrant Jersey Sh...

PROPERTY FEATURES

CONTACT



Ask for Donna Brown
Berger Realty Inc
3160 Asbury Avenue, Ocean City
Call: 609-425-8352
Email to: dmb@bergerrealty.com

Scan to see Property page.

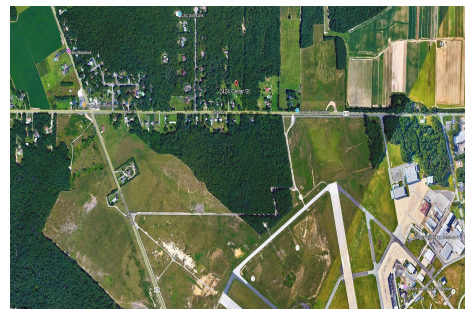


Berger Realty, Inc.
3160 Asbury Avenue
Ocean City, NJ 08226
1-877-237-4371 / 609-399-0076
info@bergerrealty.com



2424 Cedar St, Millville, NJ, 08332

Price \$799,000.00



PROPERTY DETAILS

Total Rooms	
Bedrooms	0
Baths Full	0
Baths Half	0
Year Built	
Type	
Block Number	52
Listing #	591687
Taxes	6013.00

COMMENTS

Discover a prime investment opportunity with this 53-acre industrial land at 2424 Cedar Street, Millville, New Jersey. Boasting a strategic location near key landmarks such as the Millville Airport, Millville Motorsports Raceway, and direct access to Route 55, this property provides unparalleled connectivity to major transportation networks, including the vibrant Jersey Sh...

PROPERTY FEATURES

CONTACT



Ask for Donna Brown
Berger Realty Inc
3160 Asbury Avenue, Ocean City
Call: 609-425-8352
Email to: dmb@bergerrealty.com

Scan to see Property page.

