



Berger Realty, Inc.  
3160 Asbury Avenue  
Ocean City, NJ 08226  
1-877-237-4371 / 609-399-0076  
info@bergerrealty.com



ROUTE 9 & JIMMIE LEEDS ROAD, Galloway Township, NJ,  
08205

Price \$599,900.00



#### PROPERTY DETAILS

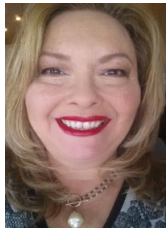
Total Rooms	
Bedrooms	0
Baths Full	0
Baths Half	0
Year Built	
Type	
Block Number	1100
Listing #	591627
Taxes	2333.00

#### COMMENTS

\*\*\*\*\*PROPERTY IS LOCATED WITHIN THE ROUTE 9 REDEVELOPMENT AREA WHICH PROVIDES FOR ZONING RELIEF, TAX ABATEMENTS AND OTHER DEVELOPMENT INCENTIVES.\*\*\*\*\* PRIME RESIDENTIAL OR COMMERCIAL DEVELOPMENT SITE ON 3.5 ACRES WITH GREAT LOCATION ON CORNER OF ROUTE 9 AND JIMMIE LEEDS ROAD ADJACENT TO RENOWNED SEAVIEW COUNTRY CLUB. PROPERTY HAS 250 FT FRONTAGE ON ROU...

#### PROPERTY FEATURES

#### CONTACT



Ask for Theresa Maina  
Berger Realty Inc  
3160 Asbury Avenue, Ocean City  
Call: 609-703-7725  
Email to: tam@bergerrealty.com

Scan to see Property page.



Berger Realty, Inc.  
3160 Asbury Avenue  
Ocean City, NJ 08226  
1-877-237-4371 / 609-399-0076  
info@bergerrealty.com



ROUTE 9 & JIMMIE LEEDS ROAD, Galloway Township, NJ,  
08205

Price \$599,900.00



#### PROPERTY DETAILS

Total Rooms	
Bedrooms	0
Baths Full	0
Baths Half	0
Year Built	
Type	
Block Number	1100
Listing #	591627
Taxes	2333.00

#### COMMENTS

\*\*\*\*\*PROPERTY IS LOCATED WITHIN THE ROUTE 9 REDEVELOPMENT AREA WHICH PROVIDES FOR ZONING RELIEF, TAX ABATEMENTS AND OTHER DEVELOPMENT INCENTIVES.\*\*\*\*\* PRIME RESIDENTIAL OR COMMERCIAL DEVELOPMENT SITE ON 3.5 ACRES WITH GREAT LOCATION ON CORNER OF ROUTE 9 AND JIMMIE LEEDS ROAD ADJACENT TO RENOWNED SEAVIEW COUNTRY CLUB. PROPERTY HAS 250 FT FRONTAGE ON ROU...

#### PROPERTY FEATURES

#### CONTACT



Ask for Theresa Maina  
Berger Realty Inc  
3160 Asbury Avenue, Ocean City  
Call: 609-703-7725  
Email to: tam@bergerrealty.com

Scan to see Property page.

