



Berger Realty, Inc.  
3160 Asbury Avenue  
Ocean City, NJ 08226  
1-877-237-4371 / 609-399-0076  
info@bergerrealty.com



34 Creek, Linwood, NJ, 08221

Price \$849,000.00

#### PROPERTY DETAILS



Total Rooms	11
Bedrooms	4
Baths Full	2
Baths Half	1
Year Built	2025
Type	Single Family
Block Number	1
Listing #	591281
Taxes	

#### COMMENTS

**Potential Incentives:** Get a 2% rate reduction for the first two years (from today's rate of 7%) with our seller paid buydown program! At completion of buydown period, your interest rate will adjust to 7% (using the above example of today's 7% rate). This is subject to lender approval and buyer qualification. Example: Year 1-5%, Year-2 6% Year-3 7% Sellers may have the ...

#### PROPERTY FEATURES

Exterior	OutsideFeatures	ParkingGarage	OtherRooms
See Remarks	Curbs	Attached Garage	Breakfast Nook
Vinyl	Deck	Auto Door Opener	Dining Area
	Patio	Two Car	Eat In Kitchen
	Paved Road		Laundry/Utility Room
	Porch		
	Sidewalks		
	Sprinkler System		
InteriorFeatures	AppliancesIncluded	Basement	Heating
Carbon Monoxide	Dishwasher	Crawl Space	Forced Air
Detector	Disposal		Gas-Natural
Kitchen Center Island	Dryer		
Smoke/Fire Alarm	Gas Stove		
Storage	Microwave		
Walk In Closet	Refrigerator		
	Self Cleaning Oven		
	Washer		
Cooling	HotWater	Water	Sewer
Ceiling Fan(s)	Gas	Public	Public Sewer
Central			

#### CONTACT

Ask for Louis Ripa  
Berger Realty Inc  
3160 Asbury Avenue, Ocean City  
Call:  
Email to: lcr@bergerrealty.com

Scan to see Property page.



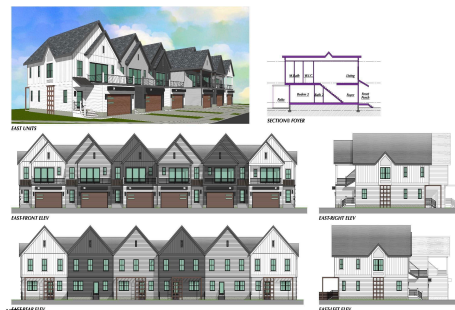
Berger Realty, Inc.  
3160 Asbury Avenue  
Ocean City, NJ 08226  
1-877-237-4371 / 609-399-0076  
info@bergerrealty.com



34 Creek, Linwood, NJ, 08221

Price \$849,000.00

#### PROPERTY DETAILS



Total Rooms	11
Bedrooms	4
Baths Full	2
Baths Half	1
Year Built	2025
Type	Single Family
Block Number	1
Listing #	591281
Taxes	

#### COMMENTS

**Potential Incentives:** Get a 2% rate reduction for the first two years (from today's rate of 7%) with our seller paid buydown program! At completion of buydown period, your interest rate will adjust to 7% (using the above example of today's 7% rate). This is subject to lender approval and buyer qualification. Example: Year 1-5%, Year-2 6% Year-3 7% Sellers may have the ...

#### PROPERTY FEATURES

Exterior	OutsideFeatures	ParkingGarage	OtherRooms
See Remarks	Curbs	Attached Garage	Breakfast Nook
Vinyl	Deck	Auto Door Opener	Dining Area
	Patio	Two Car	Eat In Kitchen
	Paved Road		Laundry/Utility Room
	Porch		
	Sidewalks		
	Sprinkler System		
InteriorFeatures	AppliancesIncluded	Basement	Heating
Carbon Monoxide	Dishwasher	Crawl Space	Forced Air
Detector	Disposal		Gas-Natural
Kitchen Center Island	Dryer		
Smoke/Fire Alarm	Gas Stove		
Storage	Microwave		
Walk In Closet	Refrigerator		
	Self Cleaning Oven		
	Washer		
Cooling	HotWater	Water	Sewer
Ceiling Fan(s)	Gas	Public	Public Sewer
Central			

#### CONTACT

Ask for Louis Ripa  
Berger Realty Inc  
3160 Asbury Avenue, Ocean City  
Call:  
Email to: lcr@bergerrealty.com

Scan to see Property page.

