



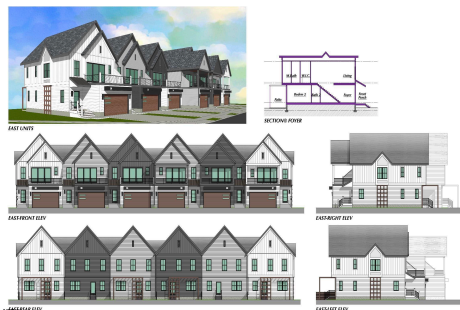
Berger Realty, Inc.
3160 Asbury Avenue
Ocean City, NJ 08226
1-877-237-4371 / 609-399-0076
info@bergerrealty.com



32 Creek, Linwood, NJ, 08221

Price \$849,000.00

PROPERTY DETAILS



Total Rooms	11
Bedrooms	4
Baths Full	2
Baths Half	1
Year Built	2025
Type	Single Family
Block Number	1
Listing #	591280
Taxes	

COMMENTS

Potential Incentives: Get a 2% rate reduction for the first two years (from today's rate of 7%) with our seller paid buydown program! At completion of buydown period, your interest rate will adjust to 7% (using the above example of today's 7% rate). This is subject to lender approval and buyer qualification. Example: Year 1-5%, Year-2 6% Year-3 7% Sellers may have the ...

PROPERTY FEATURES

Exterior	OutsideFeatures	ParkingGarage	OtherRooms
See Remarks	Curbs	Attached Garage	Breakfast Nook
Vinyl	Deck	Auto Door Opener	Dining Area
	Patio	Two Car	Eat In Kitchen
	Paved Road		Laundry/Utility Room
	Porch		
	Sidewalks		
	Sprinkler System		
InteriorFeatures	AppliancesIncluded	Basement	Heating
Carbon Monoxide	Dishwasher	Crawl Space	Forced Air
Detector	Disposal		Gas-Natural
Kitchen Center Island	Dryer		
Smoke/Fire Alarm	Gas Stove		
Storage	Microwave		
Walk In Closet	Refrigerator		
	Self Cleaning Oven		
	Washer		
Cooling	HotWater	Water	Sewer
Ceiling Fan(s)	Gas	Public	Public Sewer
Central			

CONTACT

Ask for Thomas Byrne
Berger Realty Inc
3160 Asbury Avenue, Ocean City
Call: 215-327-9152
Email to: tfb@bergerrealty.com

Scan to see Property page.



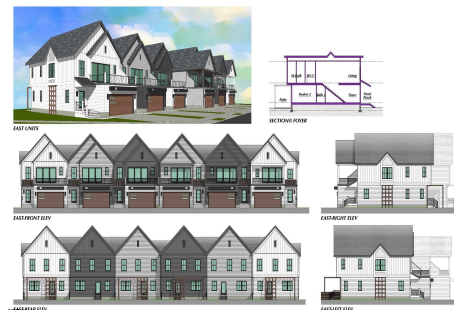
Berger Realty, Inc.
3160 Asbury Avenue
Ocean City, NJ 08226
1-877-237-4371 / 609-399-0076
info@bergerrealty.com



32 Creek, Linwood, NJ, 08221

Price \$849,000.00

PROPERTY DETAILS



Total Rooms	11
Bedrooms	4
Baths Full	2
Baths Half	1
Year Built	2025
Type	Single Family
Block Number	1
Listing #	591280
Taxes	

COMMENTS

Potential Incentives: Get a 2% rate reduction for the first two years (from today's rate of 7%) with our seller paid buydown program! At completion of buydown period, your interest rate will adjust to 7% (using the above example of today's 7% rate). This is subject to lender approval and buyer qualification. Example: Year 1-5%, Year-2 6% Year-3 7% Sellers may have the ...

PROPERTY FEATURES

Exterior	OutsideFeatures	ParkingGarage	OtherRooms
See Remarks	Curbs	Attached Garage	Breakfast Nook
Vinyl	Deck	Auto Door Opener	Dining Area
	Patio	Two Car	Eat In Kitchen
	Paved Road		Laundry/Utility Room
	Porch		
	Sidewalks		
	Sprinkler System		
InteriorFeatures	AppliancesIncluded	Basement	Heating
Carbon Monoxide	Dishwasher	Crawl Space	Forced Air
Detector	Disposal		Gas-Natural
Kitchen Center Island	Dryer		
Smoke/Fire Alarm	Gas Stove		
Storage	Microwave		
Walk In Closet	Refrigerator		
	Self Cleaning Oven		
	Washer		
Cooling	HotWater	Water	Sewer
Ceiling Fan(s)	Gas	Public	Public Sewer
Central			

CONTACT

Ask for Thomas Byrne
Berger Realty Inc
3160 Asbury Avenue, Ocean City
Call: 215-327-9152
Email to: tfb@bergerrealty.com

Scan to see Property page.

