

# Berger Realty

Since 1926



Berger Realty, Inc  
1330 Bay Avenue  
Ocean City, NJ 08226  
609-391-1330/609-391-1300  
info@bergerrealty.com



6602 Black Horse, Egg Harbor Township, NJ, 08234

Price \$3,200,000.00

## PROPERTY DETAILS

Total Rooms	
Bedrooms	0
Baths Full	0
Baths Half	0
Year Built	
Type	
Block Number	1223
Listing #	591259
Taxes	38386.00

## COMMENTS

**FOR SALE: 7+/- acres Prime corner development site with TRAFFIC LIGHT. Corner of Black Horse Pike (322) and Spruce. Property goes block to block (Spruce to Fork Rd) with 500+/- feet of frontage. Zoned HB (Highway Business). Site has preliminary approvals for 28,000+/- sf of commercial. 29,000+/- annual daily average traffic count. Prominent signage on Black Horse Pike. Atl...**

## PROPERTY FEATURES

## CONTACT



Ask for Joanne Kelly  
Berger Realty Inc  
1330 Bay Avenue, Ocean City  
Call: 609-425-2106  
Email to: jmk@bergerrealty.com

Scan to see Property page.



# Berger Realty

Since 1926



Berger Realty, Inc  
1330 Bay Avenue  
Ocean City, NJ 08226  
609-391-1330/609-391-1300  
info@bergerrealty.com



6602 Black Horse, Egg Harbor Township, NJ, 08234

Price \$3,200,000.00

## PROPERTY DETAILS

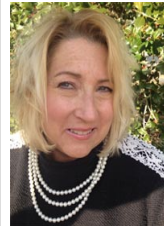
Total Rooms	
Bedrooms	0
Baths Full	0
Baths Half	0
Year Built	
Type	
Block Number	1223
Listing #	591259
Taxes	38386.00

## COMMENTS

**FOR SALE: 7+/- acres Prime corner development site with TRAFFIC LIGHT. Corner of Black Horse Pike (322) and Spruce. Property goes block to block (Spruce to Fork Rd) with 500+/- feet of frontage. Zoned HB (Highway Business). Site has preliminary approvals for 28,000+/- sf of commercial. 29,000+/- annual daily average traffic count. Prominent signage on Black Horse Pike. Atl...**

## PROPERTY FEATURES

## CONTACT



Ask for Joanne Kelly  
Berger Realty Inc  
1330 Bay Avenue, Ocean City  
Call: 609-425-2106  
Email to: jmk@bergerrealty.com

Scan to see Property page.

