



Berger Realty, Inc.
3160 Asbury Avenue
Ocean City, NJ 08226
1-877-237-4371 / 609-399-0076
info@bergerrealty.com



1123 Atlantic Ave, Egg Harbor City, NJ, 08215

Price \$329,995.00



PROPERTY DETAILS

Total Rooms	
Bedrooms	0
Baths Full	0
Baths Half	0
Year Built	1956
Type	
Block Number	527
Listing #	591228
Taxes	2741.00

COMMENTS

Spacious warehouse with a new roof, windows, bathroom, and huge new chain link fence storage yard. Freshly painted interior and exterior ready to be outfitted to suit your needs. All utilities are ready to go. The property also has a large shed and exterior concrete slab which are very useful. Seller is listed to sell but would entertain offers to lease. Almost 3000 Sqft o...

PROPERTY FEATURES

CONTACT



Ask for Sara Varani
Berger Realty Inc
3160 Asbury Avenue, Ocean City
Call:
Email to: sev@bergerrealty.com

Scan to see Property page.



Berger Realty, Inc.
3160 Asbury Avenue
Ocean City, NJ 08226
1-877-237-4371 / 609-399-0076
info@bergerrealty.com



1123 Atlantic Ave, Egg Harbor City, NJ, 08215

Price \$329,995.00



PROPERTY DETAILS

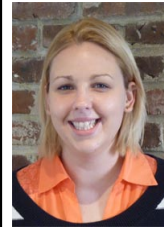
Total Rooms	
Bedrooms	0
Baths Full	0
Baths Half	0
Year Built	1956
Type	
Block Number	527
Listing #	591228
Taxes	2741.00

COMMENTS

Spacious warehouse with a new roof, windows, bathroom, and huge new chain link fence storage yard. Freshly painted interior and exterior ready to be outfitted to suit your needs. All utilities are ready to go. The property also has a large shed and exterior concrete slab which are very useful. Seller is listed to sell but would entertain offers to lease. Almost 3000 Sqft o...

PROPERTY FEATURES

CONTACT



Ask for Sara Varani
Berger Realty Inc
3160 Asbury Avenue, Ocean City
Call:
Email to: sev@bergerrealty.com

Scan to see Property page.

