



Berger Realty, Inc.
3160 Asbury Avenue
Ocean City, NJ 08226
1-877-237-4371 / 609-399-0076
info@bergerrealty.com



1800 New Rd, Northfield, NJ, 08225

Price \$1,600.00



PROPERTY DETAILS

Total Rooms	
Bedrooms	0
Baths Full	0
Baths Half	0
Year Built	
Type	
Block Number	91
Listing #	591100
Taxes	

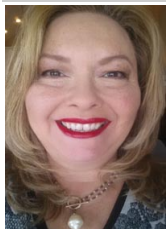
COMMENTS

Prime Office Suite at New Road & Mill Road - Position your business at one of the area's most sought-after intersections. This professional office suite features a welcoming reception area, a spacious executive corner office, and a dedicated boardroom—perfect for client meetings and team collaboration. View the attached floor plan and contact us today to schedule your ...

PROPERTY FEATURES

OutsideFeatures Sign	ParkingGarage Off Street Paved	InteriorFeatures Handicap Features	Heating Forced Air Gas-Natural Multi-Zoned
Cooling Central Multi-Zoned	Water Public	Sewer Public Sewer	

CONTACT



Ask for Theresa Maina
Berger Realty Inc
3160 Asbury Avenue, Ocean City
Call: 609-703-7725
Email to: tam@bergerrealty.com

Scan to see Property page.



Berger Realty, Inc.
3160 Asbury Avenue
Ocean City, NJ 08226
1-877-237-4371 / 609-399-0076
info@bergerrealty.com



1800 New Rd, Northfield, NJ, 08225

Price \$1,600.00



PROPERTY DETAILS

Total Rooms	
Bedrooms	0
Baths Full	0
Baths Half	0
Year Built	
Type	
Block Number	91
Listing #	591100
Taxes	

COMMENTS

Prime Office Suite at New Road & Mill Road - Position your business at one of the area's most sought-after intersections. This professional office suite features a welcoming reception area, a spacious executive corner office, and a dedicated boardroom—perfect for client meetings and team collaboration. View the attached floor plan and contact us today to schedule your ...

PROPERTY FEATURES

OutsideFeatures Sign	ParkingGarage Off Street Paved	InteriorFeatures Handicap Features	Heating Forced Air Gas-Natural Multi-Zoned
Cooling Central Multi-Zoned	Water Public	Sewer Public Sewer	

CONTACT



Ask for Theresa Maina
Berger Realty Inc
3160 Asbury Avenue, Ocean City
Call: 609-703-7725
Email to: tam@bergerrealty.com

Scan to see Property page.

