



Berger Realty, Inc.
3160 Asbury Avenue
Ocean City, NJ 08226
1-877-237-4371 / 609-399-0076
info@bergerrealty.com



1404 Madison, Atlantic City, NJ, 08401

Price \$30,000.00



PROPERTY DETAILS

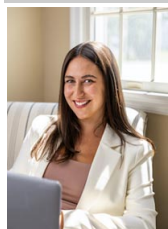
Total Rooms	
Bedrooms	0
Baths Full	0
Baths Half	0
Year Built	
Type	
Block Number	684
Listing #	591006
Taxes	415.00

COMMENTS

!"3000 sqft In Venice Park Atlantic City.... Close to Absecon Blvd and Penrose Canal. Buy now with less than a Bitcoin or ask about Private Financing Available Starting at 10%...

PROPERTY FEATURES

CONTACT



Ask for Lauren Greiner
Berger Realty Inc
3160 Asbury Avenue, Ocean City
Call: 609-602-5960
Email to: lmg@bergerrealty.com

Scan to see Property page.



Berger Realty, Inc.
3160 Asbury Avenue
Ocean City, NJ 08226
1-877-237-4371 / 609-399-0076
info@bergerrealty.com



1404 Madison, Atlantic City, NJ, 08401

Price \$30,000.00



PROPERTY DETAILS

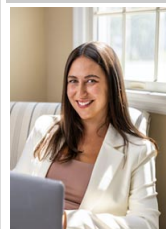
Total Rooms	
Bedrooms	0
Baths Full	0
Baths Half	0
Year Built	
Type	
Block Number	684
Listing #	591006
Taxes	415.00

COMMENTS

!"3000 sqft In Venice Park Atlantic City.... Close to Absecon Blvd and Penrose Canal. Buy now with less than a Bitcoin or ask about Private Financing Available Starting at 10%...

PROPERTY FEATURES

CONTACT



Ask for Lauren Greiner
Berger Realty Inc
3160 Asbury Avenue, Ocean City
Call: 609-602-5960
Email to: lmg@bergerrealty.com

Scan to see Property page.

