

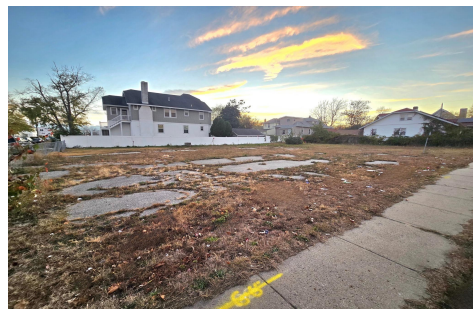


Berger Realty, Inc.
3160 Asbury Avenue
Ocean City, NJ 08226
1-877-237-4371 / 609-399-0076
info@bergerrealty.com



305-313 Black Horse, Pleasantville, NJ, 08232

Price \$90,000.00



PROPERTY DETAILS

Total Rooms	
Bedrooms	0
Baths Full	0
Baths Half	0
Year Built	
Type	
Block Number	260
Listing #	590656
Taxes	5300.00

COMMENTS

Prime commercial property with outstanding highway exposure and visibility now available for sale in Pleasantville! This property is situated in the Urban Enterprise Zone (UEZ) zoning district, located at the corner of BHP (Verona Ave) and Lyons Court. Buyers are advised to perform their own due diligence. All reasonable offers welcome!...

PROPERTY FEATURES

CONTACT



Ask for Evelyn "Evie" Schweibinz
Berger Realty Inc
3160 Asbury Avenue, Ocean City
Call:
Email to: ems@bergerrealty.com

Scan to see Property page.



Berger Realty, Inc.
3160 Asbury Avenue
Ocean City, NJ 08226
1-877-237-4371 / 609-399-0076
info@bergerrealty.com



305-313 Black Horse, Pleasantville, NJ, 08232

Price \$90,000.00



PROPERTY DETAILS

Total Rooms	
Bedrooms	0
Baths Full	0
Baths Half	0
Year Built	
Type	
Block Number	260
Listing #	590656
Taxes	5300.00

COMMENTS

Prime commercial property with outstanding highway exposure and visibility now available for sale in Pleasantville! This property is situated in the Urban Enterprise Zone (UEZ) zoning district, located at the corner of BHP (Verona Ave) and Lyons Court. Buyers are advised to perform their own due diligence. All reasonable offers welcome!...

PROPERTY FEATURES

CONTACT



Ask for Evelyn "Evie" Schweibinz
Berger Realty Inc
3160 Asbury Avenue, Ocean City
Call:
Email to: ems@bergerrealty.com

Scan to see Property page.

