

Berger Realty

Since 1926



Berger Realty, Inc.
3160 Asbury Avenue
Ocean City, NJ 08226
1-877-237-4371 / 609-399-0076
info@bergerrealty.com



294 White Horse Pike, Egg Harbor City, NJ, 08215

Price \$995,000.00



PROPERTY DETAILS

| | |
|--------------|---------|
| Total Rooms | |
| Bedrooms | 0 |
| Baths Full | 0 |
| Baths Half | 0 |
| Year Built | |
| Type | |
| Block Number | 526 |
| Listing # | 590510 |
| Taxes | 4510.00 |

COMMENTS

Located in the Pomona section of Galloway this property consists of a little over 8 acres. Zoning is Highway Commercial and in a redevelopment zone. Many possible uses can be done and possible tax benefits to the developer....

PROPERTY FEATURES

CONTACT



Ask for Matthew Bader
Berger Realty Inc
3160 Asbury Avenue, Ocean City
Call: 609-992-4380
Email to: mhb@bergerrealty.com
http://www.BADERCOLLINS.com

Scan to see Property page.



Berger Realty

Since 1926

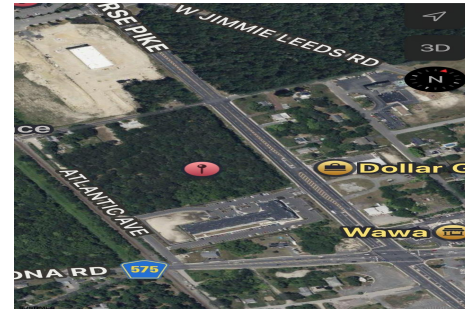


Berger Realty, Inc.
3160 Asbury Avenue
Ocean City, NJ 08226
1-877-237-4371 / 609-399-0076
info@bergerrealty.com



294 White Horse Pike, Egg Harbor City, NJ, 08215

Price \$995,000.00



PROPERTY DETAILS

| | |
|--------------|---------|
| Total Rooms | |
| Bedrooms | 0 |
| Baths Full | 0 |
| Baths Half | 0 |
| Year Built | |
| Type | |
| Block Number | 526 |
| Listing # | 590510 |
| Taxes | 4510.00 |

COMMENTS

Located in the Pomona section of Galloway this property consists of a little over 8 acres. Zoning is Highway Commercial and in a redevelopment zone. Many possible uses can be done and possible tax benefits to the developer....

PROPERTY FEATURES

CONTACT



Ask for Matthew Bader
Berger Realty Inc
3160 Asbury Avenue, Ocean City
Call: 609-992-4380
Email to: mhb@bergerrealty.com
http://www.BADERCOLLINS.com

Scan to see Property page.

