

# Berger Realty

Since 1926



Berger Realty, Inc.  
3160 Asbury Avenue  
Ocean City, NJ 08226  
1-877-237-4371 / 609-399-0076  
info@bergerrealty.com



45 Laclede Pl, Atlantic City, NJ, 08401

Price \$555,000.00

## PROPERTY DETAILS

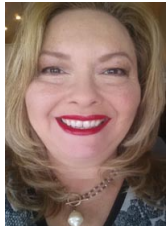
Total Rooms	
Bedrooms	0
Baths Full	0
Baths Half	0
Year Built	
Type	
Block Number	202
Listing #	590272
Taxes	811.00

## COMMENTS

*A near beach-block lot brimming with potential. This is an incredible opportunity to build something remarkable in historic Lower Chelsea. Just steps from the beach, boardwalk, and transportation, ensuring you enjoy the coastal lifestyle to the fullest. This lot is a place full of endless possibilities. Because of the nature of ownership, you have the option to purchase th...*

## PROPERTY FEATURES

## CONTACT



Ask for Theresa Maina  
Berger Realty Inc  
3160 Asbury Avenue, Ocean City  
Call: 609-703-7725  
Email to: tam@bergerrealty.com

Scan to see Property page.



# Berger Realty

Since 1926



Berger Realty, Inc.  
3160 Asbury Avenue  
Ocean City, NJ 08226  
1-877-237-4371 / 609-399-0076  
info@bergerrealty.com



45 Laclede Pl, Atlantic City, NJ, 08401

Price \$555,000.00

## PROPERTY DETAILS

Total Rooms	
Bedrooms	0
Baths Full	0
Baths Half	0
Year Built	
Type	
Block Number	202
Listing #	590272
Taxes	811.00

## COMMENTS

*A near beach-block lot brimming with potential. This is an incredible opportunity to build something remarkable in historic Lower Chelsea. Just steps from the beach, boardwalk, and transportation, ensuring you enjoy the coastal lifestyle to the fullest. This lot is a place full of endless possibilities. Because of the nature of ownership, you have the option to purchase th...*

## PROPERTY FEATURES

## CONTACT



Ask for Theresa Maina  
Berger Realty Inc  
3160 Asbury Avenue, Ocean City  
Call: 609-703-7725  
Email to: tam@bergerrealty.com

Scan to see Property page.

