

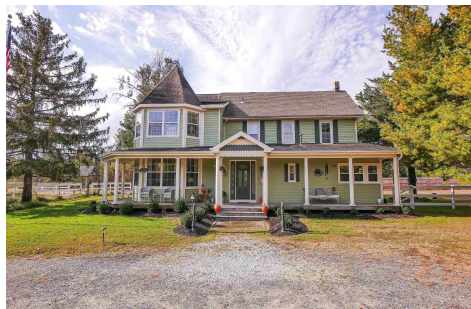


Berger Realty, Inc.  
3160 Asbury Avenue  
Ocean City, NJ 08226  
1-877-237-4371 / 609-399-0076  
info@bergerrealty.com



11 Equestrian, Smithville, NJ, 08205

Price \$625,000.00



#### PROPERTY DETAILS

Total Rooms	12
Bedrooms	4
Baths Full	2
Baths Half	1
Year Built	
Type	Single Family
Block Number	1179.03
Listing #	590258
Taxes	8986.00

#### COMMENTS

Welcome to 11 Equestrian Drive! Magnificent 3,159 GFA. Victorian on 1.9 Acres at the end of a private lane in a great exclusive Smithville location. This stunning 4-bedroom, 2 ½ bath home beautifully blends modern updates with original charm, making it a true gem in South Jersey. This unique property combines having extreme privacy on a large piece of land with the luxury...

#### PROPERTY FEATURES

Exterior	OutsideFeatures	ParkingGarage	OtherRooms
Vinyl	Deck	Detached Garage	Breakfast Nook
	Fenced Yard	Three or More Cars	Den/TV Room
	Porch		Dining Room
	Shed		Eat In Kitchen
			Florida Room
			Laundry/Utility Room
			Pantry
			Storage Attic
			Workshop
InteriorFeatures	AppliancesIncluded	AlsoIncluded	Basement
Carbon Monoxide	Dishwasher	Blinds	Crawl Space
Detector	Disposal	Curtains	
Kitchen Center Island	Dryer		
Smoke/Fire Alarm	Gas Stove		
Storage	Microwave		
	Refrigerator		
	Self Cleaning Oven		
	Washer		
Heating	Cooling	Water	Sewer
Forced Air	Electric	Public	Public Sewer
Gas-Natural	Multi-Zoned		
Multi-Zoned			

#### CONTACT

Berger Realty Inc  
3160 Asbury Ave.

Scan to see Property page.



Berger Realty, Inc.  
3160 Asbury Avenue  
Ocean City, NJ 08226  
1-877-237-4371 / 609-399-0076  
info@bergerrealty.com



11 Equestrian, Smithville, NJ, 08205

Price \$625,000.00



#### PROPERTY DETAILS

Total Rooms	12
Bedrooms	4
Baths Full	2
Baths Half	1
Year Built	
Type	Single Family
Block Number	1179.03
Listing #	590258
Taxes	8986.00

#### COMMENTS

Welcome to 11 Equestrian Drive! Magnificent 3,159 GFA. Victorian on 1.9 Acres at the end of a private lane in a great exclusive Smithville location. This stunning 4-bedroom, 2 ½ bath home beautifully blends modern updates with original charm, making it a true gem in South Jersey. This unique property combines having extreme privacy on a large piece of land with the luxury...

#### PROPERTY FEATURES

Exterior	OutsideFeatures	ParkingGarage	OtherRooms
Vinyl	Deck	Detached Garage	Breakfast Nook
	Fenced Yard	Three or More Cars	Den/TV Room
	Porch		Dining Room
	Shed		Eat In Kitchen
			Florida Room
			Laundry/Utility Room
			Pantry
			Storage Attic
			Workshop
InteriorFeatures	AppliancesIncluded	AlsoIncluded	Basement
Carbon Monoxide	Dishwasher	Blinds	Crawl Space
Detector	Disposal	Curtains	
Kitchen Center Island	Dryer		
Smoke/Fire Alarm	Gas Stove		
Storage	Microwave		
	Refrigerator		
	Self Cleaning Oven		
	Washer		
Heating	Cooling	Water	Sewer
Forced Air	Electric	Public	Public Sewer
Gas-Natural	Multi-Zoned		
Multi-Zoned			

#### CONTACT

Berger Realty Inc  
3160 Asbury Ave.

Scan to see Property page.

Ocean City, NJ 08226  
Call: (609) 399-0076  
Email to: [info@bergerrealty.com](mailto:info@bergerrealty.com)  
Web: [www.bergerrealty.com](http://www.bergerrealty.com)

Ocean City, NJ 08226  
Call: (609) 399-0076  
Email to: [info@bergerrealty.com](mailto:info@bergerrealty.com)  
Web: [www.bergerrealty.com](http://www.bergerrealty.com)

