

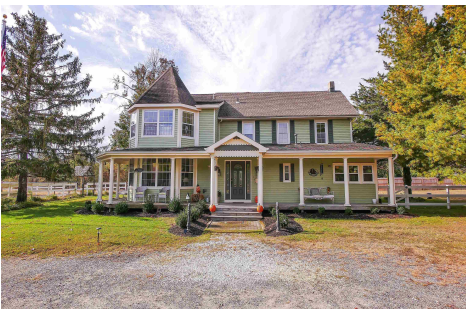


Berger Realty, Inc  
1330 Bay Avenue  
Ocean City, NJ 08226  
609-391-1330/609-391-1300  
info@bergerrealty.com



11 Equestrian, Smithville, NJ, 08205

Price \$625,000.00



#### PROPERTY DETAILS

|              |               |
|--------------|---------------|
| Total Rooms  | 12            |
| Bedrooms     | 4             |
| Baths Full   | 2             |
| Baths Half   | 1             |
| Year Built   |               |
| Type         | Single Family |
| Block Number | 1179.03       |
| Listing #    | 590258        |
| Taxes        | 8986.00       |

#### COMMENTS

Welcome to 11 Equestrian Drive! Magnificent 3,159 GFA. Victorian on 1.9 Acres at the end of a private lane in a great exclusive Smithville location. This stunning 4-bedroom, 2 ½ bath home beautifully blends modern updates with original charm, making it a true gem in South Jersey. This unique property combines having extreme privacy on a large piece of land with the luxury...

#### PROPERTY FEATURES

|   |   |  |   |
|---|---|--|---|
| Exterior<br>Vinyl   | OutsideFeatures<br>Deck<br>Fenced Yard<br>Porch<br>Shed   | ParkingGarage<br>Detached Garage<br>Three or More Cars | OtherRooms<br>Breakfast Nook<br>Den/TV Room<br>Dining Room<br>Eat In Kitchen<br>Florida Room<br>Laundry/Utility Room<br>Pantry<br>Storage Attic<br>Workshop |
| InteriorFeatures<br>Carbon Monoxide<br>Detector<br>Kitchen Center Island<br>Smoke/Fire Alarm<br>Storage | AppliancesIncluded<br>Dishwasher<br>Disposal<br>Dryer<br>Gas Stove<br>Microwave<br>Refrigerator<br>Self Cleaning Oven<br>Washer | AlsoIncluded<br>Blinds<br>Curtains                     | Basement<br>Crawl Space   |
| Heating<br>Forced Air<br>Gas-Natural<br>Multi-Zoned   | Cooling<br>Electric<br>Multi-Zoned  | Water<br>Public  | Sewer<br>Public Sewer   |

#### CONTACT

Ask for Cassidy Fletcher  
Berger Realty Inc

Scan to see Property page.



Berger Realty, Inc  
1330 Bay Avenue  
Ocean City, NJ 08226  
609-391-1330/609-391-1300  
info@bergerrealty.com



11 Equestrian, Smithville, NJ, 08205

Price \$625,000.00



#### PROPERTY DETAILS

|              |               |
|--------------|---------------|
| Total Rooms  | 12            |
| Bedrooms     | 4             |
| Baths Full   | 2             |
| Baths Half   | 1             |
| Year Built   |               |
| Type         | Single Family |
| Block Number | 1179.03       |
| Listing #    | 590258        |
| Taxes        | 8986.00       |

#### COMMENTS

Welcome to 11 Equestrian Drive! Magnificent 3,159 GFA. Victorian on 1.9 Acres at the end of a private lane in a great exclusive Smithville location. This stunning 4-bedroom, 2 ½ bath home beautifully blends modern updates with original charm, making it a true gem in South Jersey. This unique property combines having extreme privacy on a large piece of land with the luxury...

#### PROPERTY FEATURES

|   |   |  |   |
|---|---|--|---|
| Exterior<br>Vinyl   | OutsideFeatures<br>Deck<br>Fenced Yard<br>Porch<br>Shed   | ParkingGarage<br>Detached Garage<br>Three or More Cars | OtherRooms<br>Breakfast Nook<br>Den/TV Room<br>Dining Room<br>Eat In Kitchen<br>Florida Room<br>Laundry/Utility Room<br>Pantry<br>Storage Attic<br>Workshop |
| InteriorFeatures<br>Carbon Monoxide<br>Detector<br>Kitchen Center Island<br>Smoke/Fire Alarm<br>Storage | AppliancesIncluded<br>Dishwasher<br>Disposal<br>Dryer<br>Gas Stove<br>Microwave<br>Refrigerator<br>Self Cleaning Oven<br>Washer | AlsoIncluded<br>Blinds<br>Curtains                     | Basement<br>Crawl Space   |
| Heating<br>Forced Air<br>Gas-Natural<br>Multi-Zoned   | Cooling<br>Electric<br>Multi-Zoned  | Water<br>Public  | Sewer<br>Public Sewer   |

#### CONTACT

Ask for Cassidy Fletcher  
Berger Realty Inc

Scan to see Property page.



**1330 Bay Avenue, Ocean City**  
**Call: 609-425-6121**  
**Email to: [crf@bergerrealty.com](mailto:crf@bergerrealty.com)**



**1330 Bay Avenue, Ocean City**  
**Call: 609-425-6121**  
**Email to: [crf@bergerrealty.com](mailto:crf@bergerrealty.com)**

