



Berger Realty, Inc.  
3160 Asbury Avenue  
Ocean City, NJ 08226  
1-877-237-4371 / 609-399-0076  
info@bergerrealty.com



318 ISLAND LANE, Egg Harbor Township, NJ, 08234

Price \$199,000.00

#### PROPERTY DETAILS

Total Rooms	
Bedrooms	0
Baths Full	0
Baths Half	0
Year Built	
Type	
Block Number	7304
Listing #	589766
Taxes	2653.00

#### COMMENTS

**HARBOR ACRES - LUXURY HOMES! BEAUTIFUL .93 ACRE WOODED LOT IN EGG HARBOR TOWNSHIP'S FINEST RESIDENTIAL NEIGHBORHOOD! BEST BUILDING HOMESITE IN EGG HARBOR TOWNSHIP! GREAT PRIVATE LOCATION!...**

#### PROPERTY FEATURES

#### CONTACT



Ask for Evelyn "Evie" Schweibinz  
Berger Realty Inc  
3160 Asbury Avenue, Ocean City  
Call:  
Email to: [ems@bergerrealty.com](mailto:ems@bergerrealty.com)

Scan to see Property page.



Berger Realty, Inc.  
3160 Asbury Avenue  
Ocean City, NJ 08226  
1-877-237-4371 / 609-399-0076  
info@bergerrealty.com



318 ISLAND LANE, Egg Harbor Township, NJ, 08234

Price \$199,000.00

#### PROPERTY DETAILS

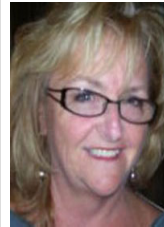
Total Rooms	
Bedrooms	0
Baths Full	0
Baths Half	0
Year Built	
Type	
Block Number	7304
Listing #	589766
Taxes	2653.00

#### COMMENTS

**HARBOR ACRES - LUXURY HOMES! BEAUTIFUL .93 ACRE WOODED LOT IN EGG HARBOR TOWNSHIP'S FINEST RESIDENTIAL NEIGHBORHOOD! BEST BUILDING HOMESITE IN EGG HARBOR TOWNSHIP! GREAT PRIVATE LOCATION!...**

#### PROPERTY FEATURES

#### CONTACT



Ask for Evelyn "Evie" Schweibinz  
Berger Realty Inc  
3160 Asbury Avenue, Ocean City  
Call:  
Email to: [ems@bergerrealty.com](mailto:ems@bergerrealty.com)

Scan to see Property page.

