



Berger Realty, Inc.  
3160 Asbury Avenue  
Ocean City, NJ 08226  
1-877-237-4371 / 609-399-0076  
info@bergerrealty.com



4090 English Creek Ave, Egg Harbor Township, NJ, 08234

Price \$69,900.00



#### PROPERTY DETAILS

Total Rooms	
Bedrooms	0
Baths Full	0
Baths Half	0
Year Built	
Type	
Block Number	3401
Listing #	589389
Taxes	2226.00

#### COMMENTS

*Great opportunity and excellent exposure. This lot provides high visibility for anyone seeking to develop for commercial and or residential purposes. Property was acquired through a tax sale. Buyer to perform all due diligence....*

#### PROPERTY FEATURES

#### CONTACT



Ask for Veronica "Ronni" Vetro  
Berger Realty Inc  
3160 Asbury Avenue, Ocean City  
Call: 215-806-1817  
Email to: vrv@bergerrealty.com

Scan to see Property page.

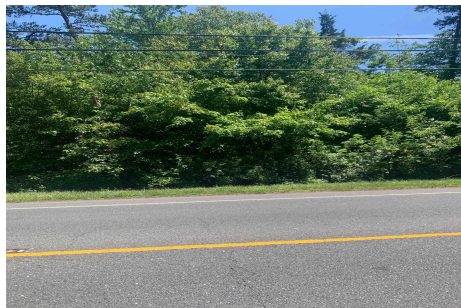


Berger Realty, Inc.  
3160 Asbury Avenue  
Ocean City, NJ 08226  
1-877-237-4371 / 609-399-0076  
info@bergerrealty.com



4090 English Creek Ave, Egg Harbor Township, NJ, 08234

Price \$69,900.00



#### PROPERTY DETAILS

Total Rooms	
Bedrooms	0
Baths Full	0
Baths Half	0
Year Built	
Type	
Block Number	3401
Listing #	589389
Taxes	2226.00

#### COMMENTS

*Great opportunity and excellent exposure. This lot provides high visibility for anyone seeking to develop for commercial and or residential purposes. Property was acquired through a tax sale. Buyer to perform all due diligence....*

#### PROPERTY FEATURES

#### CONTACT



Ask for Veronica "Ronni" Vetro  
Berger Realty Inc  
3160 Asbury Avenue, Ocean City  
Call: 215-806-1817  
Email to: vrv@bergerrealty.com

Scan to see Property page.

