



Berger Realty, Inc.
3160 Asbury Avenue
Ocean City, NJ 08226
1-877-237-4371 / 609-399-0076
info@bergerrealty.com



266 London Ct, 266, Egg Harbor Township, NJ, 08234

Price \$195,500.00

PROPERTY DETAILS



Total Rooms	4
Bedrooms	2
Baths Full	1
Baths Half	0
Year Built	
Type	Condo
Block Number	2204
Listing #	588796
Taxes	2551.00

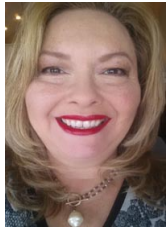
COMMENTS

Property is being sold \ " AS IS \ " condition...

PROPERTY FEATURES

ParkingGarage	Heating	Water	Sewer
None	Gas-Natural	Public Water	Public Sewer

CONTACT



Ask for Theresa Maina
Berger Realty Inc
3160 Asbury Avenue, Ocean City
Call: 609-703-7725
Email to: tam@bergerrealty.com

Scan to see Property page.



Berger Realty, Inc.
3160 Asbury Avenue
Ocean City, NJ 08226
1-877-237-4371 / 609-399-0076
info@bergerrealty.com



266 London Ct, 266, Egg Harbor Township, NJ, 08234

Price \$195,500.00

PROPERTY DETAILS



Total Rooms	4
Bedrooms	2
Baths Full	1
Baths Half	0
Year Built	
Type	Condo
Block Number	2204
Listing #	588796
Taxes	2551.00

COMMENTS

Property is being sold \ " AS IS \ " condition...

PROPERTY FEATURES

ParkingGarage	Heating	Water	Sewer
None	Gas-Natural	Public Water	Public Sewer

CONTACT



Ask for Theresa Maina
Berger Realty Inc
3160 Asbury Avenue, Ocean City
Call: 609-703-7725
Email to: tam@bergerrealty.com

Scan to see Property page.

