

Berger Realty

Since 1926



Berger Realty, Inc.
3160 Asbury Avenue
Ocean City, NJ 08226
1-877-237-4371 / 609-399-0076
info@bergerrealty.com



37 Iowa Ave APT 2A, 2A, Atlantic City, NJ, 08401

Price \$139,000.00

PROPERTY DETAILS

Total Rooms	3
Bedrooms	2
Baths Full	1
Baths Half	1
Year Built	
Type	Condo
Block Number	173
Listing #	588726
Taxes	1364.00

COMMENTS

Awesome Location! 2-bedroom 1.5 bath condo in the center of all the action! View of the Tropicana! Close to Beach! Close to Stockton University! ALL brand-new Anderson replacement windows, brand new flooring throughout, new stove and refrigerator, and recently renovated bathroom, Approx 850 SQFT. Move in Ready!...

PROPERTY FEATURES

Exterior Brick	ParkingGarage None	InteriorFeatures Elevator	Heating Baseboard Electric
Cooling Window Units	HotWater Gas	Water Public Water	Sewer Public Sewer

CONTACT



Ask for Sara Varani
Berger Realty Inc
3160 Asbury Avenue, Ocean City
Call:
Email to: sev@bergerrealty.com

Scan to see Property page.



Berger Realty

Since 1926



Berger Realty, Inc.
3160 Asbury Avenue
Ocean City, NJ 08226
1-877-237-4371 / 609-399-0076
info@bergerrealty.com



37 Iowa Ave APT 2A, 2A, Atlantic City, NJ, 08401

Price \$139,000.00

PROPERTY DETAILS

Total Rooms	3
Bedrooms	2
Baths Full	1
Baths Half	1
Year Built	
Type	Condo
Block Number	173
Listing #	588726
Taxes	1364.00

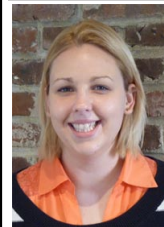
COMMENTS

Awesome Location! 2-bedroom 1.5 bath condo in the center of all the action! View of the Tropicana! Close to Beach! Close to Stockton University! ALL brand-new Anderson replacement windows, brand new flooring throughout, new stove and refrigerator, and recently renovated bathroom, Approx 850 SQFT. Move in Ready!...

PROPERTY FEATURES

Exterior Brick	ParkingGarage None	InteriorFeatures Elevator	Heating Baseboard Electric
Cooling Window Units	HotWater Gas	Water Public Water	Sewer Public Sewer

CONTACT



Ask for Sara Varani
Berger Realty Inc
3160 Asbury Avenue, Ocean City
Call:
Email to: sev@bergerrealty.com

Scan to see Property page.

