

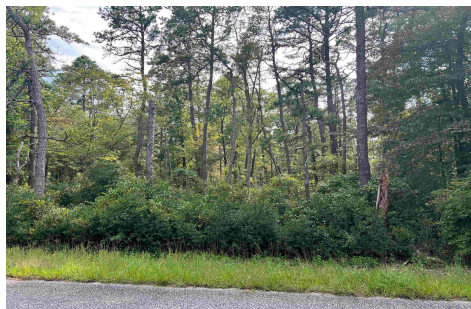


Berger Realty, Inc.
3160 Asbury Avenue
Ocean City, NJ 08226
1-877-237-4371 / 609-399-0076
info@bergerrealty.com



5827 Holly, Mays Landing, NJ, 08330

Price \$80,000.00



PROPERTY DETAILS

Total Rooms	
Bedrooms	0
Baths Full	0
Baths Half	0
Year Built	
Type	
Block Number	944
Listing #	588420
Taxes	1880.00

COMMENTS

Discover the perfect canvas for your dream home on this 5-acre buildable lot. This Rd5 Zone lot Nestled in a serene and sought-after location, this prime piece of land offers endless possibilities for creating your ideal retreat. this lot provides the flexibility to create a space that suits your lifestyle. Located in the Hamilton Township school district (Oakcrest & Cedar...

PROPERTY FEATURES

CONTACT



Ask for Joe Young
Berger Realty Inc
3160 Asbury Avenue, Ocean City
Call:
Email to: jty@bergerrealty.com

Scan to see Property page.

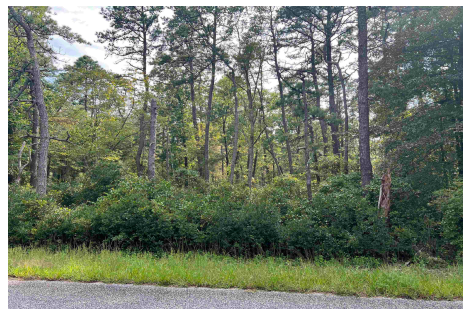


Berger Realty, Inc.
3160 Asbury Avenue
Ocean City, NJ 08226
1-877-237-4371 / 609-399-0076
info@bergerrealty.com



5827 Holly, Mays Landing, NJ, 08330

Price \$80,000.00



PROPERTY DETAILS

Total Rooms	
Bedrooms	0
Baths Full	0
Baths Half	0
Year Built	
Type	
Block Number	944
Listing #	588420
Taxes	1880.00

COMMENTS

Discover the perfect canvas for your dream home on this 5-acre buildable lot. This Rd5 Zone lot Nestled in a serene and sought-after location, this prime piece of land offers endless possibilities for creating your ideal retreat. this lot provides the flexibility to create a space that suits your lifestyle. Located in the Hamilton Township school district (Oakcrest & Cedar...

PROPERTY FEATURES

CONTACT



Ask for Joe Young
Berger Realty Inc
3160 Asbury Avenue, Ocean City
Call:
Email to: jty@bergerrealty.com

Scan to see Property page.

