

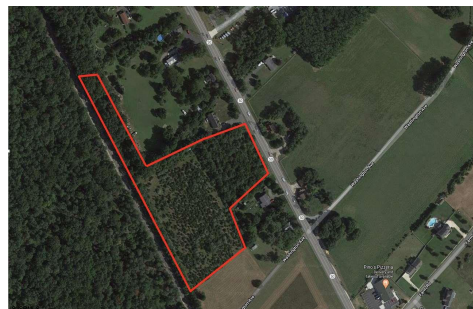


Berger Realty, Inc.
3160 Asbury Avenue
Ocean City, NJ 08226
1-877-237-4371 / 609-399-0076
info@bergerrealty.com



1520 Route 50, Upper Township, NJ, 08270

Price \$230,000.00



PROPERTY DETAILS

Total Rooms	
Bedrooms	0
Baths Full	0
Baths Half	0
Year Built	
Type	
Block Number	382
Listing #	588081
Taxes	5880.00

COMMENTS

6.87 +/- acres. \$33,478.90/acre. Located in Tuckahoe, Upper Township in Cape May County, on the south side across from Dollar General and near Levari's Seafood & American Grille. Route 50 is a prominent route to the shore points of Ocean City, Strathmere & Sea Isle, with connections to Rt. 9 and Garden State Parkway. Call LA for details. Lots must be sold together...

PROPERTY FEATURES

CONTACT



Ask for Dori Adams
Berger Realty Inc
3160 Asbury Avenue, Ocean City
Call: 609-602-2545
Email to: doa@bergerrealty.com

Scan to see Property page.



Berger Realty, Inc.
3160 Asbury Avenue
Ocean City, NJ 08226
1-877-237-4371 / 609-399-0076
info@bergerrealty.com



1520 Route 50, Upper Township, NJ, 08270

Price \$230,000.00



PROPERTY DETAILS

Total Rooms	
Bedrooms	0
Baths Full	0
Baths Half	0
Year Built	
Type	
Block Number	382
Listing #	588081
Taxes	5880.00

COMMENTS

6.87 +/- acres. \$33,478.90/acre. Located in Tuckahoe, Upper Township in Cape May County, on the south side across from Dollar General and near Levari's Seafood & American Grille. Route 50 is a prominent route to the shore points of Ocean City, Strathmere & Sea Isle, with connections to Rt. 9 and Garden State Parkway. Call LA for details. Lots must be sold together...

PROPERTY FEATURES

CONTACT



Ask for Dori Adams
Berger Realty Inc
3160 Asbury Avenue, Ocean City
Call: 609-602-2545
Email to: doa@bergerrealty.com

Scan to see Property page.

