

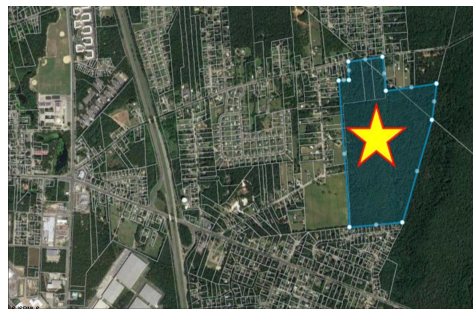


Berger Realty, Inc.
3160 Asbury Avenue
Ocean City, NJ 08226
1-877-237-4371 / 609-399-0076
info@bergerrealty.com



Newcombtown, Millville, NJ, 08332

Price \$3,150,000.00



PROPERTY DETAILS

Total Rooms	
Bedrooms	0
Baths Full	0
Baths Half	0
Year Built	
Type	
Block Number	525
Listing #	587200
Taxes	7624.00

COMMENTS

100+ acres for sale. Millville (small portion straddles into Vineland). Prime development opportunity. Had prior approvals for 225 single family homes. Close to Hwy 55 and Rte. 49 interchange....

PROPERTY FEATURES

CONTACT



Ask for Dori Adams
Berger Realty Inc
3160 Asbury Avenue, Ocean City
Call: 609-602-2545
Email to: doa@bergerrealty.com

Scan to see Property page.



Berger Realty, Inc.
3160 Asbury Avenue
Ocean City, NJ 08226
1-877-237-4371 / 609-399-0076
info@bergerrealty.com



Newcombtown, Millville, NJ, 08332

Price \$3,150,000.00



PROPERTY DETAILS

Total Rooms	
Bedrooms	0
Baths Full	0
Baths Half	0
Year Built	
Type	
Block Number	525
Listing #	587200
Taxes	7624.00

COMMENTS

100+ acres for sale. Millville (small portion straddles into Vineland). Prime development opportunity. Had prior approvals for 225 single family homes. Close to Hwy 55 and Rte. 49 interchange....

PROPERTY FEATURES

CONTACT



Ask for Dori Adams
Berger Realty Inc
3160 Asbury Avenue, Ocean City
Call: 609-602-2545
Email to: doa@bergerrealty.com

Scan to see Property page.

