

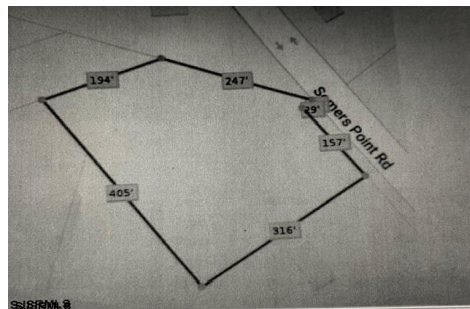


Berger Realty, Inc.
3160 Asbury Avenue
Ocean City, NJ 08226
1-877-237-4371 / 609-399-0076
info@bergerrealty.com



5067 Mays Landing Sp, Mays Landing, NJ, 08330

Price \$123,725.00



PROPERTY DETAILS

Total Rooms	
Bedrooms	0
Baths Full	0
Baths Half	0
Year Built	
Type	
Block Number	981.0
Listing #	587124
Taxes	2019.00

COMMENTS

2.53 acre. Last lot in the Forest Walk development. This lot is in CAFRA. Approved septic design for 4 BR single family home. Look at the Associated Doc. for more information. This is ASIS sale .Buyer is responsible to verify and obtain all permits....

PROPERTY FEATURES

CONTACT



Ask for Patricia (Trish) Spengler
Berger Realty Inc
3160 Asbury Avenue, Ocean City
Call: 609-425-9254
Email to: pjs@bergerrealty.com

Scan to see Property page.

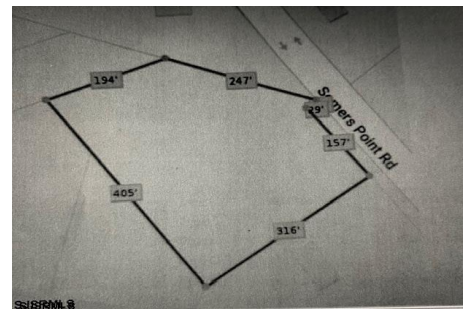


Berger Realty, Inc.
3160 Asbury Avenue
Ocean City, NJ 08226
1-877-237-4371 / 609-399-0076
info@bergerrealty.com



5067 Mays Landing Sp, Mays Landing, NJ, 08330

Price \$123,725.00



PROPERTY DETAILS

Total Rooms	
Bedrooms	0
Baths Full	0
Baths Half	0
Year Built	
Type	
Block Number	981.0
Listing #	587124
Taxes	2019.00

COMMENTS

2.53 acre. Last lot in the Forest Walk development. This lot is in CAFRA. Approved septic design for 4 BR single family home. Look at the Associated Doc. for more information. This is ASIS sale .Buyer is responsible to verify and obtain all permits....

PROPERTY FEATURES

CONTACT



Ask for Patricia (Trish) Spengler
Berger Realty Inc
3160 Asbury Avenue, Ocean City
Call: 609-425-9254
Email to: pjs@bergerrealty.com

Scan to see Property page.

