

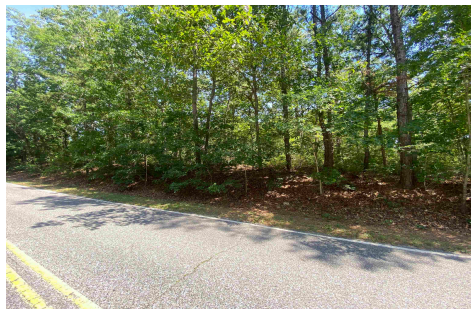


Berger Realty, Inc.  
3160 Asbury Avenue  
Ocean City, NJ 08226  
1-877-237-4371 / 609-399-0076  
info@bergerrealty.com



333 Cologne Port Rd, Port Republic, NJ, 08241

Price \$115,000.00



#### PROPERTY DETAILS

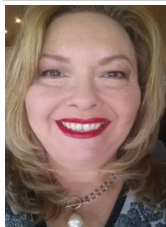
Total Rooms	
Bedrooms	0
Baths Full	0
Baths Half	0
Year Built	
Type	
Block Number	16
Listing #	586778
Taxes	1703.00

#### COMMENTS

*This property has been prepared to be a BUILDABLE PARCEL through the Pinelands. Beautiful wooded piece of property high and dry. Documents attached include Survey and Pinelands Certificate of Filing as well as Soil Borings from 2002....*

#### PROPERTY FEATURES

#### CONTACT



Ask for Theresa Maina  
Berger Realty Inc  
3160 Asbury Avenue, Ocean City  
Call: 609-703-7725  
Email to: tam@bergerrealty.com

Scan to see Property page.

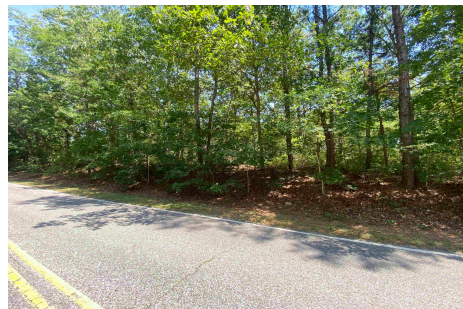


Berger Realty, Inc.  
3160 Asbury Avenue  
Ocean City, NJ 08226  
1-877-237-4371 / 609-399-0076  
info@bergerrealty.com



333 Cologne Port Rd, Port Republic, NJ, 08241

Price \$115,000.00



#### PROPERTY DETAILS

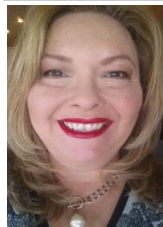
Total Rooms	
Bedrooms	0
Baths Full	0
Baths Half	0
Year Built	
Type	
Block Number	16
Listing #	586778
Taxes	1703.00

#### COMMENTS

*This property has been prepared to be a BUILDABLE PARCEL through the Pinelands. Beautiful wooded piece of property high and dry. Documents attached include Survey and Pinelands Certificate of Filing as well as Soil Borings from 2002....*

#### PROPERTY FEATURES

#### CONTACT



Ask for Theresa Maina  
Berger Realty Inc  
3160 Asbury Avenue, Ocean City  
Call: 609-703-7725  
Email to: tam@bergerrealty.com

Scan to see Property page.

