

# Berger Realty

Since 1926

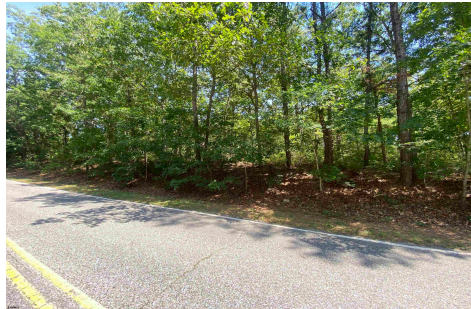


Berger Realty, Inc  
1330 Bay Avenue  
Ocean City, NJ 08226  
609-391-1330/609-391-1300  
info@bergerrealty.com



333 Cologne Port Rd, Port Republic, NJ, 08241

Price \$115,000.00



## PROPERTY DETAILS

Total Rooms	
Bedrooms	0
Baths Full	0
Baths Half	0
Year Built	
Type	
Block Number	16
Listing #	586778
Taxes	1703.00

## COMMENTS

*This property has been prepared to be a BUILDABLE PARCEL through the Pinelands. Beautiful wooded piece of property high and dry. Documents attached include Survey and Pinelands Certificate of Filing as well as Soil Borings from 2002....*

## PROPERTY FEATURES

## CONTACT



Ask for Michael Wallitsch  
Berger Realty Inc  
1330 Bay Avenue, Ocean City  
Call: 609-350-9800  
Email to: mow@bergerrealty.com

Scan to see Property page.



# Berger Realty

Since 1926

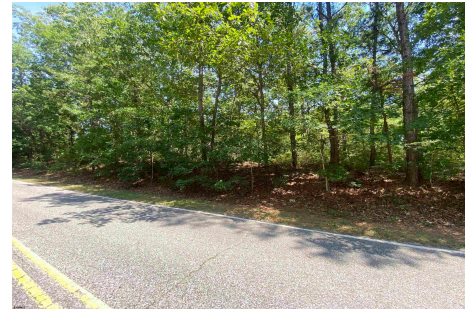


Berger Realty, Inc  
1330 Bay Avenue  
Ocean City, NJ 08226  
609-391-1330/609-391-1300  
info@bergerrealty.com



333 Cologne Port Rd, Port Republic, NJ, 08241

Price \$115,000.00



## PROPERTY DETAILS

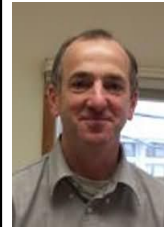
Total Rooms	
Bedrooms	0
Baths Full	0
Baths Half	0
Year Built	
Type	
Block Number	16
Listing #	586778
Taxes	1703.00

## COMMENTS

*This property has been prepared to be a BUILDABLE PARCEL through the Pinelands. Beautiful wooded piece of property high and dry. Documents attached include Survey and Pinelands Certificate of Filing as well as Soil Borings from 2002....*

## PROPERTY FEATURES

## CONTACT



Ask for Michael Wallitsch  
Berger Realty Inc  
1330 Bay Avenue, Ocean City  
Call: 609-350-9800  
Email to: mow@bergerrealty.com

Scan to see Property page.

