

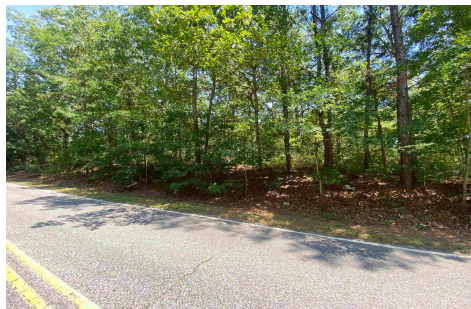


Berger Realty, Inc.
3160 Asbury Avenue
Ocean City, NJ 08226
1-877-237-4371 / 609-399-0076
info@bergerrealty.com



333 Cologne Port Rd, Port Republic, NJ, 08241

Price \$115,000.00



PROPERTY DETAILS

Total Rooms	
Bedrooms	0
Baths Full	0
Baths Half	0
Year Built	
Type	
Block Number	16
Listing #	586778
Taxes	1703.00

COMMENTS

This property has been prepared to be a BUILDABLE PARCEL through the Pinelands. Beautiful wooded piece of property high and dry. Documents attached include Survey and Pinelands Certificate of Filing as well as Soil Borings from 2002....

PROPERTY FEATURES

CONTACT

Berger Realty Inc
3160 Asbury Ave.
Ocean City, NJ 08226
Call: (609) 399-0076
Email to: info@bergerrealty.com
Web: www.bergerrealty.com

Scan to see Property page.

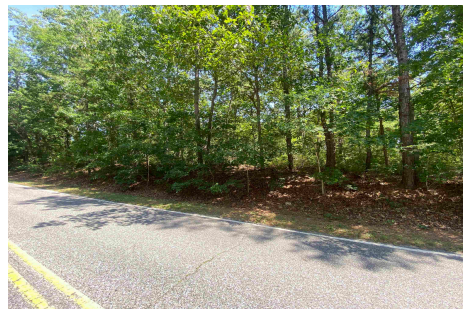


Berger Realty, Inc.
3160 Asbury Avenue
Ocean City, NJ 08226
1-877-237-4371 / 609-399-0076
info@bergerrealty.com



333 Cologne Port Rd, Port Republic, NJ, 08241

Price \$115,000.00



PROPERTY DETAILS

Total Rooms	
Bedrooms	0
Baths Full	0
Baths Half	0
Year Built	
Type	
Block Number	16
Listing #	586778
Taxes	1703.00

COMMENTS

This property has been prepared to be a BUILDABLE PARCEL through the Pinelands. Beautiful wooded piece of property high and dry. Documents attached include Survey and Pinelands Certificate of Filing as well as Soil Borings from 2002....

PROPERTY FEATURES

CONTACT

Berger Realty Inc
3160 Asbury Ave.
Ocean City, NJ 08226
Call: (609) 399-0076
Email to: info@bergerrealty.com
Web: www.bergerrealty.com

Scan to see Property page.

