

# Berger Realty

Since 1926



Ocean 17  
1670 Boardwalk  
Ocean City, NJ 08226  
609-391-0500

[oc17@BergerRealty.com](mailto:oc17@BergerRealty.com)



1400-1418 Antwerp Ave, Egg Harbor City, NJ, 08215

Price \$185,000.00

### PROPERTY DETAILS

Total Rooms	
Bedrooms	0
Baths Full	0
Baths Half	0
Year Built	
Type	
Block Number	1003
Listing #	585307
Taxes	1666.00



### COMMENTS

*This is a buildable 2.4-acre lot in the Egg Harbor City Industrial Park. With available water and sewer, it is a great opportunity for a developer or any investor in this area....*

### PROPERTY FEATURES

### CONTACT



Ask for Margarita Kobilianets  
Berger Realty Inc  
1670 Boardwalk, Ocean City  
Call: 609-674-3417  
Email to: [mak@bergerrealty.com](mailto:mak@bergerrealty.com)

Scan to see Property page.



# Berger Realty

Since 1926



Ocean 17  
1670 Boardwalk  
Ocean City, NJ 08226  
609-391-0500

[oc17@BergerRealty.com](mailto:oc17@BergerRealty.com)



1400-1418 Antwerp Ave, Egg Harbor City, NJ, 08215

Price \$185,000.00

### PROPERTY DETAILS

Total Rooms	
Bedrooms	0
Baths Full	0
Baths Half	0
Year Built	
Type	
Block Number	1003
Listing #	585307
Taxes	1666.00

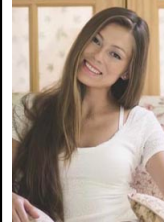


### COMMENTS

*This is a buildable 2.4-acre lot in the Egg Harbor City Industrial Park. With available water and sewer, it is a great opportunity for a developer or any investor in this area....*

### PROPERTY FEATURES

### CONTACT



Ask for Margarita Kobilianets  
Berger Realty Inc  
1670 Boardwalk, Ocean City  
Call: 609-674-3417  
Email to: [mak@bergerrealty.com](mailto:mak@bergerrealty.com)

Scan to see Property page.

