

Berger Realty

Since 1926



Ocean 17
1670 Boardwalk
Ocean City, NJ 08226
609-391-0500

oc17@BergerRealty.com



Berger Realty

Since 1926



Ocean 17
1670 Boardwalk
Ocean City, NJ 08226
609-391-0500

oc17@BergerRealty.com



1410 Cantillon Blvd, Mays Landing, NJ, 08330

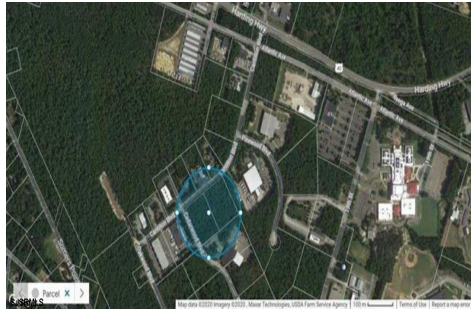
Price \$560,000.00

1410 Cantillon Blvd, Mays Landing, NJ, 08330

Price \$560,000.00

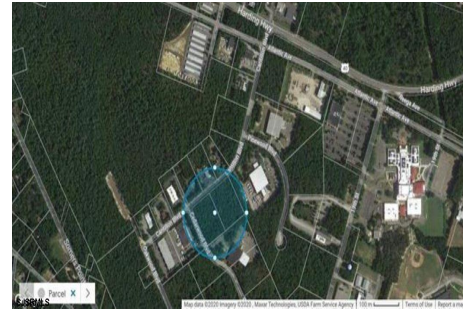
PROPERTY DETAILS

Total Rooms	
Bedrooms	0
Baths Full	0
Baths Half	0
Year Built	
Type	
Block Number	994
Listing #	585175
Taxes	2839.00



PROPERTY DETAILS

Total Rooms	
Bedrooms	0
Baths Full	0
Baths Half	0
Year Built	
Type	
Block Number	994
Listing #	585175
Taxes	2839.00



COMMENTS

Hamilton Twp. fully approved lot in Atlantic County. Hamilton Business Park allows for offices, warehouses, light manufacturing, medical facility, banks, gyms, general business. (all subject to approvals) This 5.33 Acre lot has all approvals to build a 40,000 sq. ft building for an approved business. All Pinelands leg work has been completed and approved ready to start ...

COMMENTS

Hamilton Twp. fully approved lot in Atlantic County. Hamilton Business Park allows for offices, warehouses, light manufacturing, medical facility, banks, gyms, general business. (all subject to approvals) This 5.33 Acre lot has all approvals to build a 40,000 sq. ft building for an approved business. All Pinelands leg work has been completed and approved ready to start ...

PROPERTY FEATURES

CONTACT



Ask for Laryn Crisci
Berger Realty Inc
1670 Boardwalk, Ocean City
Call: 610-368-8416
Email to: lrc@bergerrealty.com

Scan to see Property page.



PROPERTY FEATURES

CONTACT



Ask for Laryn Crisci
Berger Realty Inc
1670 Boardwalk, Ocean City
Call: 610-368-8416
Email to: lrc@bergerrealty.com

Scan to see Property page.

