

Berger Realty

Since 1926

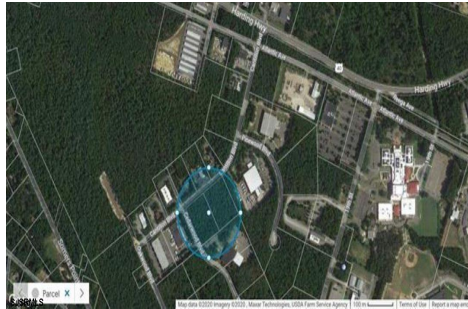


Berger Realty, Inc.
55th & Haven Avenue
Ocean City, NJ 08226
609-399-0040
info@bergerrealty.com



1410 Cantillon Blvd, Mays Landing, NJ, 08330

Price \$560,000.00



PROPERTY DETAILS

Total Rooms	
Bedrooms	0
Baths Full	0
Baths Half	0
Year Built	
Type	
Block Number	994
Listing #	585175
Taxes	2839.00

COMMENTS

Hamilton Twp. fully approved lot in Atlantic County. Hamilton Business Park allows for offices, warehouses, light manufacturing, medical facility, banks, gyms, general business. (all subject to approvals) This 5.33 Acre lot has all approvals to build a 40,000 sq. ft building for an approved business. All Pinelands leg work has been completed and approved ready to start ...

PROPERTY FEATURES

CONTACT



Ask for Bob Wilkins
Berger Realty Inc
109 E 55th St., Ocean City
Call: 609-425-7423
Email to: bw@bergerrealty.com

Scan to see Property page.



Berger Realty

Since 1926



Berger Realty, Inc.
55th & Haven Avenue
Ocean City, NJ 08226
609-399-0040
info@bergerrealty.com



1410 Cantillon Blvd, Mays Landing, NJ, 08330

Price \$560,000.00



PROPERTY DETAILS

Total Rooms	
Bedrooms	0
Baths Full	0
Baths Half	0
Year Built	
Type	
Block Number	994
Listing #	585175
Taxes	2839.00

COMMENTS

Hamilton Twp. fully approved lot in Atlantic County. Hamilton Business Park allows for offices, warehouses, light manufacturing, medical facility, banks, gyms, general business. (all subject to approvals) This 5.33 Acre lot has all approvals to build a 40,000 sq. ft building for an approved business. All Pinelands leg work has been completed and approved ready to start ...

PROPERTY FEATURES

CONTACT



Ask for Bob Wilkins
Berger Realty Inc
109 E 55th St., Ocean City
Call: 609-425-7423
Email to: bw@bergerrealty.com

Scan to see Property page.

