

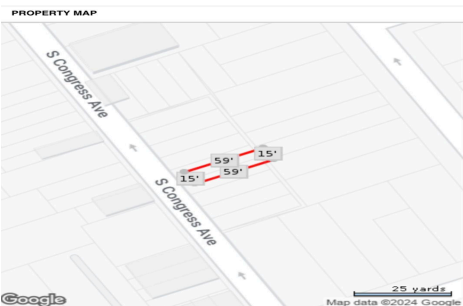


Berger Realty, Inc.
3160 Asbury Avenue
Ocean City, NJ 08226
1-877-237-4371 / 609-399-0076
info@bergerrealty.com



65 Congress Ave, Atlantic City, NJ, 08401

Price \$10,000.00



PROPERTY DETAILS

Total Rooms	
Bedrooms	0
Baths Full	0
Baths Half	0
Year Built	
Type	
Block Number	130
Listing #	584979
Taxes	317.00

COMMENTS

Vacant land located in the Casino reinvestment development. Lot size is a approximately 15x59. Please call CRDA for development questions609-347-0500....

PROPERTY FEATURES

CONTACT



Ask for Tara Crusier-Moss
Berger Realty Inc
3160 Asbury Avenue, Ocean City
Call: 609-317-5396
Email to: tcm@bergerrealty.com

Scan to see Property page.

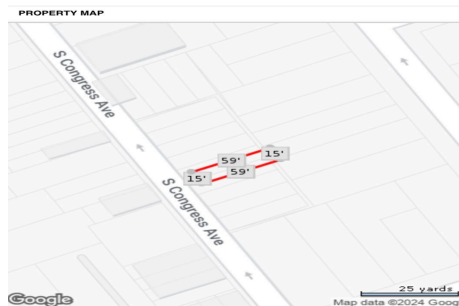


Berger Realty, Inc.
3160 Asbury Avenue
Ocean City, NJ 08226
1-877-237-4371 / 609-399-0076
info@bergerrealty.com



65 Congress Ave, Atlantic City, NJ, 08401

Price \$10,000.00



PROPERTY DETAILS

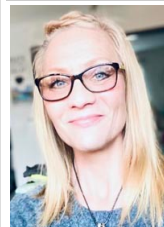
Total Rooms	
Bedrooms	0
Baths Full	0
Baths Half	0
Year Built	
Type	
Block Number	130
Listing #	584979
Taxes	317.00

COMMENTS

Vacant land located in the Casino reinvestment development. Lot size is a approximately 15x59. Please call CRDA for development questions609-347-0500....

PROPERTY FEATURES

CONTACT



Ask for Tara Crusier-Moss
Berger Realty Inc
3160 Asbury Avenue, Ocean City
Call: 609-317-5396
Email to: tcm@bergerrealty.com

Scan to see Property page.

