

# Berger Realty

Since 1928



Berger Realty, Inc.  
3160 Asbury Avenue  
Ocean City, NJ 08226  
1-877-237-4371 / 609-399-0076  
info@bergerrealty.com



3424 Winchester, Atlantic City, NJ, 08401

Price \$999,000.00

### PROPERTY DETAILS

Total Rooms	
Bedrooms	0
Baths Full	0
Baths Half	0
Year Built	1940
Type	
Block Number	1
Listing #	584915
Taxes	9254.00

### COMMENTS

*Not gonna last long! Rare Find! 6 UNIT BUILDING (ALL OCCUPIED) \*\*6,876 square ft.\*\* WITH GREAT RENTAL HISTORY, CLOSE TO STOCKTON ATLANTIC CITY CAMPUS in the University District. Very close to the desired Chelsea area. Great Investment Property. 1st floor zoned "Light" Commercial referring to (Offices, free standing retail, restaurant, medical facility, etc. (Unit 1- 2B...*

### PROPERTY FEATURES

OutsideFeatures	ParkingGarage	OtherRooms	Heating
Curbs	None	Dining Area	Baseboard
Sidewalks		Dining Room	Electric
		Kitchen	Forced Air
		Laundry/Utility Rm	Gas-Natural
		Living Room	
Cooling	Water	Sewer	
Central	Public	Public Sewer	
Wall Units			

### CONTACT



Ask for Marki Lyn Warlow  
Berger Realty Inc  
3160 Asbury Avenue, Ocean City  
Call:  
Email to: mlw@bergerrealty.com

Scan to see Property page.



# Berger Realty

Since 1928



Berger Realty, Inc.  
3160 Asbury Avenue  
Ocean City, NJ 08226  
1-877-237-4371 / 609-399-0076  
info@bergerrealty.com



3424 Winchester, Atlantic City, NJ, 08401

Price \$999,000.00

### PROPERTY DETAILS

Total Rooms	
Bedrooms	0
Baths Full	0
Baths Half	0
Year Built	1940
Type	
Block Number	1
Listing #	584915
Taxes	9254.00

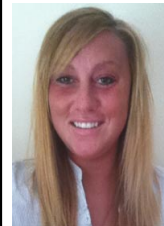
### COMMENTS

*Not gonna last long! Rare Find! 6 UNIT BUILDING (ALL OCCUPIED) \*\*6,876 square ft.\*\* WITH GREAT RENTAL HISTORY, CLOSE TO STOCKTON ATLANTIC CITY CAMPUS in the University District. Very close to the desired Chelsea area. Great Investment Property. 1st floor zoned "Light" Commercial referring to (Offices, free standing retail, restaurant, medical facility, etc. (Unit 1- 2B...*

### PROPERTY FEATURES

OutsideFeatures	ParkingGarage	OtherRooms	Heating
Curbs	None	Dining Area	Baseboard
Sidewalks		Dining Room	Electric
		Kitchen	Forced Air
		Laundry/Utility Rm	Gas-Natural
		Living Room	
Cooling	Water	Sewer	
Central	Public	Public Sewer	
Wall Units			

### CONTACT



Ask for Marki Lyn Warlow  
Berger Realty Inc  
3160 Asbury Avenue, Ocean City  
Call:  
Email to: mlw@bergerrealty.com

Scan to see Property page.

