

Berger Realty

Since 1926



Berger Realty, Inc.
3160 Asbury Avenue
Ocean City, NJ 08226
1-877-237-4371 / 609-399-0076
info@bergerrealty.com



New York Ave Corner of New York ave and Great Creek rd,
Galloway Township, NJ, 08205

Price \$159,000.00



Land For Sale

PROPERTY DETAILS

Total Rooms	0
Bedrooms	0
Baths Full	0
Baths Half	0
Year Built	
Type	
Block Number	1167.
Listing #	584839
Taxes	2142.00

COMMENTS

Vacant land. Property had buildings on it at one time, all removed. Zoned CC2, Community Commercial 2 which means you can put almost anything there....

PROPERTY FEATURES

CONTACT



Ask for Marki Lyn Warlow
Berger Realty Inc
3160 Asbury Avenue, Ocean City
Call:
Email to: mlw@bergerrealty.com

Scan to see Property page.



Berger Realty

Since 1926



Berger Realty, Inc.
3160 Asbury Avenue
Ocean City, NJ 08226
1-877-237-4371 / 609-399-0076
info@bergerrealty.com



New York Ave Corner of New York ave and Great Creek rd,
Galloway Township, NJ, 08205

Price \$159,000.00



Land For Sale

PROPERTY DETAILS

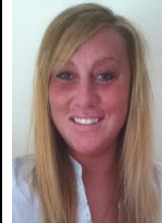
Total Rooms	0
Bedrooms	0
Baths Full	0
Baths Half	0
Year Built	
Type	
Block Number	1167.
Listing #	584839
Taxes	2142.00

COMMENTS

Vacant land. Property had buildings on it at one time, all removed. Zoned CC2, Community Commercial 2 which means you can put almost anything there....

PROPERTY FEATURES

CONTACT



Ask for Marki Lyn Warlow
Berger Realty Inc
3160 Asbury Avenue, Ocean City
Call:
Email to: mlw@bergerrealty.com

Scan to see Property page.

