

# Berger Realty

Since 1926

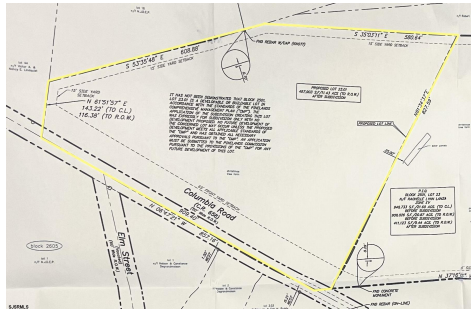


Berger Realty, Inc.  
3160 Asbury Avenue  
Ocean City, NJ 08226  
1-877-237-4371 / 609-399-0076  
info@bergerrealty.com



0 Columbia, Hammonton, NJ, 08037

Price \$279,900.00



## PROPERTY DETAILS

Total Rooms	0
Bedrooms	0
Baths Full	0
Baths Half	0
Year Built	
Type	
Block Number	23
Listing #	584820
Taxes	10154.00

## COMMENTS

Discover a unique opportunity in Mullica Township, NJ 08037. This newly subdivided 11.43-acre lot on Columbia Road is your gateway to rural tranquility. Currently operating as a conifer farm, it offers valuable white pines, suitable for transplanting with a tree spade and potential resale. This property holds promise for various uses: continue farming, build a serene singl...

## PROPERTY FEATURES

## CONTACT



Ask for Francis Cuomo  
Berger Realty Inc  
3160 Asbury Avenue, Ocean City  
Call: 609-305-3503  
Email to: fmc@bergerrealty.com

Scan to see Property page.



# Berger Realty

Since 1926

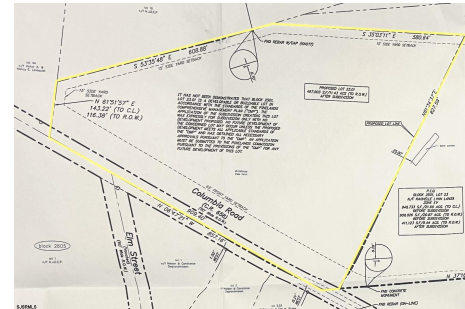


Berger Realty, Inc.  
3160 Asbury Avenue  
Ocean City, NJ 08226  
1-877-237-4371 / 609-399-0076  
info@bergerrealty.com



0 Columbia, Hammonton, NJ, 08037

Price \$279,900.00



## PROPERTY DETAILS

Total Rooms	0
Bedrooms	0
Baths Full	0
Baths Half	0
Year Built	
Type	
Block Number	23
Listing #	584820
Taxes	10154.00

## COMMENTS

Discover a unique opportunity in Mullica Township, NJ 08037. This newly subdivided 11.43-acre lot on Columbia Road is your gateway to rural tranquility. Currently operating as a conifer farm, it offers valuable white pines, suitable for transplanting with a tree spade and potential resale. This property holds promise for various uses: continue farming, build a serene singl...

## PROPERTY FEATURES

## CONTACT



Ask for Francis Cuomo  
Berger Realty Inc  
3160 Asbury Avenue, Ocean City  
Call: 609-305-3503  
Email to: fmc@bergerrealty.com

Scan to see Property page.

