

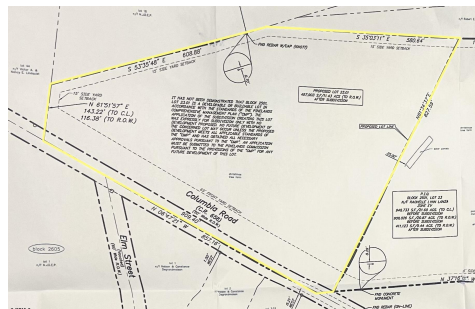


Berger Realty, Inc.
3160 Asbury Avenue
Ocean City, NJ 08226
1-877-237-4371 / 609-399-0076
info@bergerrealty.com



0 Columbia, Hammonton, NJ, 08037

Price \$279,900.00



PROPERTY DETAILS

Total Rooms	0
Bedrooms	0
Baths Full	0
Baths Half	0
Year Built	
Type	
Block Number	23
Listing #	584820
Taxes	10154.00

COMMENTS

Discover a unique opportunity in Mullica Township, NJ 08037. This newly subdivided 11.43-acre lot on Colombia Road is your gateway to rural tranquility. Currently operating as a conifer farm, it offers valuable white pines, suitable for transplanting with a tree spade and potential resale. This property holds promise for various uses: continue farming, build a serene singl...

PROPERTY FEATURES

CONTACT



Ask for Cynthia Balles
Berger Realty Inc
3160 Asbury Avenue, Ocean City
Call: 609-432-2524
Email to: cyn@bergerrealty.com

Scan to see Property page.

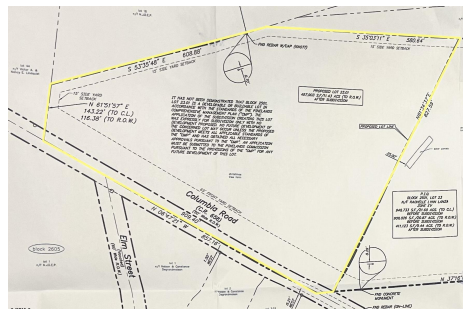


Berger Realty, Inc.
3160 Asbury Avenue
Ocean City, NJ 08226
1-877-237-4371 / 609-399-0076
info@bergerrealty.com



0 Columbia, Hammonton, NJ, 08037

Price \$279,900.00



PROPERTY DETAILS

Total Rooms	0
Bedrooms	0
Baths Full	0
Baths Half	0
Year Built	
Type	
Block Number	23
Listing #	584820
Taxes	10154.00

COMMENTS

Discover a unique opportunity in Mullica Township, NJ 08037. This newly subdivided 11.43-acre lot on Colombia Road is your gateway to rural tranquility. Currently operating as a conifer farm, it offers valuable white pines, suitable for transplanting with a tree spade and potential resale. This property holds promise for various uses: continue farming, build a serene singl...

PROPERTY FEATURES

CONTACT



Ask for Cynthia Balles
Berger Realty Inc
3160 Asbury Avenue, Ocean City
Call: 609-432-2524
Email to: cyn@bergerrealty.com

Scan to see Property page.

