

Berger Realty

Since 1926



Berger Realty, Inc.
55th & Haven Avenue
Ocean City, NJ 08226
609-399-0040

info@bergerrealty.com



Berger Realty

Since 1926



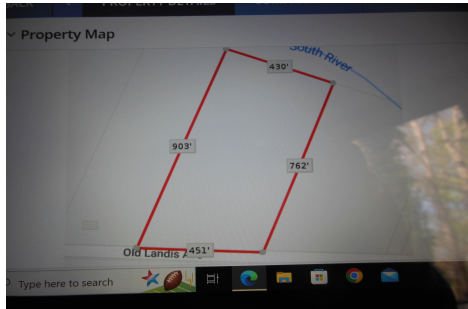
Berger Realty, Inc.
55th & Haven Avenue
Ocean City, NJ 08226
609-399-0040

info@bergerrealty.com



Landis ave, Mays Landing, NJ, 08330

Price \$50,000.00



PROPERTY DETAILS

| | |
|--------------|---------|
| Total Rooms | 0 |
| Bedrooms | 0 |
| Baths Full | 0 |
| Baths Half | 0 |
| Year Built | |
| Type | |
| Block Number | 529 |
| Listing # | 584725 |
| Taxes | 1935.00 |

COMMENTS

8.35 acres for sale . Contact listing agent for any further details...

PROPERTY FEATURES

CONTACT



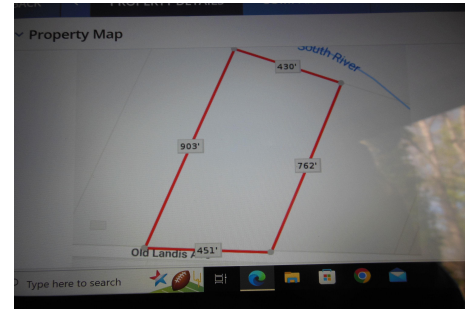
Ask for Carole Lelli
Berger Realty Inc
109 E 55th St., Ocean City
Call: 609-412-1340
Email to: cli@bergerrealty.com

Scan to see Property page.



Landis ave, Mays Landing, NJ, 08330

Price \$50,000.00



PROPERTY DETAILS

| | |
|--------------|---------|
| Total Rooms | 0 |
| Bedrooms | 0 |
| Baths Full | 0 |
| Baths Half | 0 |
| Year Built | |
| Type | |
| Block Number | 529 |
| Listing # | 584725 |
| Taxes | 1935.00 |

COMMENTS

8.35 acres for sale . Contact listing agent for any further details...

PROPERTY FEATURES

CONTACT



Ask for Carole Lelli
Berger Realty Inc
109 E 55th St., Ocean City
Call: 609-412-1340
Email to: cli@bergerrealty.com

Scan to see Property page.

