

Berger Realty

Since 1926



Berger Realty, Inc.
3160 Asbury Avenue
Ocean City, NJ 08226
1-877-237-4371 / 609-399-0076
info@bergerrealty.com



Landis ave, Mays Landing, NJ, 08330

Price \$50,000.00



PROPERTY DETAILS

Total Rooms	
Bedrooms	0
Baths Full	0
Baths Half	0
Year Built	
Type	
Block Number	529
Listing #	584725
Taxes	1935.00

COMMENTS

8.35 acres for sale . Contact listing agent for any further details...

PROPERTY FEATURES

CONTACT



Ask for Brandon Howell
Berger Realty Inc
3160 Asbury Avenue, Ocean City
Call: 609-964-6369
Email to: bah@bergerrealty.com

Scan to see Property page.



Berger Realty

Since 1926

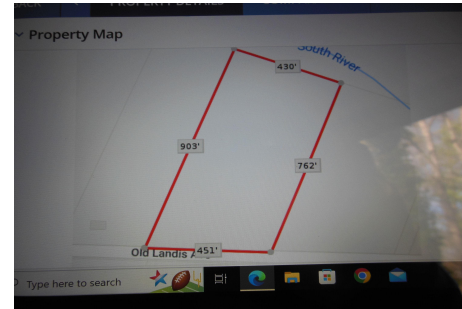


Berger Realty, Inc.
3160 Asbury Avenue
Ocean City, NJ 08226
1-877-237-4371 / 609-399-0076
info@bergerrealty.com



Landis ave, Mays Landing, NJ, 08330

Price \$50,000.00



PROPERTY DETAILS

Total Rooms	
Bedrooms	0
Baths Full	0
Baths Half	0
Year Built	
Type	
Block Number	529
Listing #	584725
Taxes	1935.00

COMMENTS

8.35 acres for sale . Contact listing agent for any further details...

PROPERTY FEATURES

CONTACT



Ask for Brandon Howell
Berger Realty Inc
3160 Asbury Avenue, Ocean City
Call: 609-964-6369
Email to: bah@bergerrealty.com

Scan to see Property page.

