

Berger Realty

Since 1926



Berger Realty, Inc.
3160 Asbury Avenue
Ocean City, NJ 08226
1-877-237-4371 / 609-399-0076
info@bergerrealty.com



7231 Belmont Ave, Mays Landing, NJ, 08330

Price \$110,000.00



PROPERTY DETAILS

Total Rooms	
Bedrooms	0
Baths Full	0
Baths Half	0
Year Built	
Type	
Block Number	215
Listing #	584631
Taxes	2698.00

COMMENTS

Wooded Lots in great Rural area waiting for a new owner. Several older and newer Beautiful homes already built along this street. Power lines are along the front of the lot on Belmont Ave. Buyer is responsible for doing their due diligence and obtain any and all permits or inspections required....

PROPERTY FEATURES

CONTACT



Ask for Joyce McMahon
Berger Realty Inc
3160 Asbury Avenue, Ocean City
Call:
Email to: jmm@bergerrealty.com

Scan to see Property page.



Berger Realty

Since 1926



Berger Realty, Inc.
3160 Asbury Avenue
Ocean City, NJ 08226
1-877-237-4371 / 609-399-0076
info@bergerrealty.com



7231 Belmont Ave, Mays Landing, NJ, 08330

Price \$110,000.00



PROPERTY DETAILS

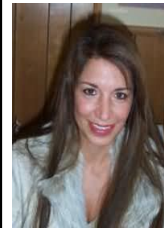
Total Rooms	
Bedrooms	0
Baths Full	0
Baths Half	0
Year Built	
Type	
Block Number	215
Listing #	584631
Taxes	2698.00

COMMENTS

Wooded Lots in great Rural area waiting for a new owner. Several older and newer Beautiful homes already built along this street. Power lines are along the front of the lot on Belmont Ave. Buyer is responsible for doing their due diligence and obtain any and all permits or inspections required....

PROPERTY FEATURES

CONTACT



Ask for Joyce McMahon
Berger Realty Inc
3160 Asbury Avenue, Ocean City
Call:
Email to: jmm@bergerrealty.com

Scan to see Property page.

