



Berger Realty, Inc.
3160 Asbury Avenue
Ocean City, NJ 08226
1-877-237-4371 / 609-399-0076
info@bergerrealty.com



183 jeffers landing, Egg Harbor Township, NJ, 08234

Price \$110,000.00



PROPERTY DETAILS

| | |
|--------------|---------|
| Total Rooms | |
| Bedrooms | 0 |
| Baths Full | 0 |
| Baths Half | 0 |
| Year Built | |
| Type | |
| Block Number | 8901 |
| Listing # | 584614 |
| Taxes | 3400.00 |

COMMENTS

over 90 acres on great harbor river, hunt fish, trap, maybe park small boat on meadow....

PROPERTY FEATURES

CONTACT



Ask for Jeremy Kershbaumer
Berger Realty Inc
3160 Asbury Avenue, Ocean City
Call: 609-367-3669
Email to: jek@bergerrealty.com

Scan to see Property page.

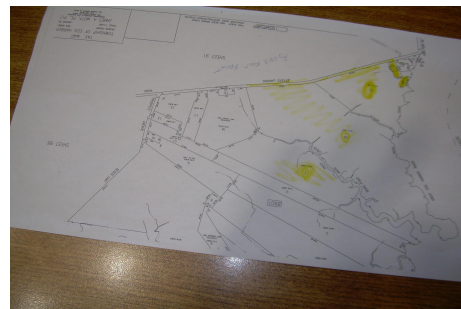


Berger Realty, Inc.
3160 Asbury Avenue
Ocean City, NJ 08226
1-877-237-4371 / 609-399-0076
info@bergerrealty.com



183 jeffers landing, Egg Harbor Township, NJ, 08234

Price \$110,000.00



PROPERTY DETAILS

| | |
|--------------|---------|
| Total Rooms | |
| Bedrooms | 0 |
| Baths Full | 0 |
| Baths Half | 0 |
| Year Built | |
| Type | |
| Block Number | 8901 |
| Listing # | 584614 |
| Taxes | 3400.00 |

COMMENTS

over 90 acres on great harbor river, hunt fish, trap, maybe park small boat on meadow....

PROPERTY FEATURES

CONTACT



Ask for Jeremy Kershbaumer
Berger Realty Inc
3160 Asbury Avenue, Ocean City
Call: 609-367-3669
Email to: jek@bergerrealty.com

Scan to see Property page.

