

# Berger Realty

Since 1926



Berger Realty, Inc.  
3160 Asbury Avenue  
Ocean City, NJ 08226  
1-877-237-4371 / 609-399-0076  
info@bergerrealty.com



19 MacArthur, Somers Point, NJ, 08244

Price \$2,799,000.00

### PROPERTY DETAILS

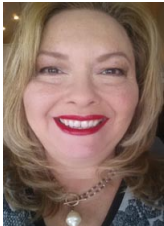
Total Rooms	
Bedrooms	0
Baths Full	0
Baths Half	0
Year Built	
Type	
Block Number	1815
Listing #	584607
Taxes	39000.00

### COMMENTS

**Investor alert! Commercial zoning in a high traffic area! Located on highly traveled MacArthur Blvd heading into Ocean City. Land Fronts MacArthur Blvd, Centre Ave and Dobbs Ave in Somers Point NJ. approximately 4 acres. Visibility and accessibility make this one of the best business locations in Somers Point. Approximate Traffic per day ranges from 15,000 to 50,000 depend...**

### PROPERTY FEATURES

### CONTACT



Ask for Theresa Maina  
Berger Realty Inc  
3160 Asbury Avenue, Ocean City  
Call: 609-703-7725  
Email to: tam@bergerrealty.com

Scan to see Property page.



# Berger Realty

Since 1926



Berger Realty, Inc.  
3160 Asbury Avenue  
Ocean City, NJ 08226  
1-877-237-4371 / 609-399-0076  
info@bergerrealty.com



19 MacArthur, Somers Point, NJ, 08244

Price \$2,799,000.00

### PROPERTY DETAILS

Total Rooms	
Bedrooms	0
Baths Full	0
Baths Half	0
Year Built	
Type	
Block Number	1815
Listing #	584607
Taxes	39000.00

### COMMENTS

**Investor alert! Commercial zoning in a high traffic area! Located on highly traveled MacArthur Blvd heading into Ocean City. Land Fronts MacArthur Blvd, Centre Ave and Dobbs Ave in Somers Point NJ. approximately 4 acres. Visibility and accessibility make this one of the best business locations in Somers Point. Approximate Traffic per day ranges from 15,000 to 50,000 depend...**

### PROPERTY FEATURES

### CONTACT



Ask for Theresa Maina  
Berger Realty Inc  
3160 Asbury Avenue, Ocean City  
Call: 609-703-7725  
Email to: tam@bergerrealty.com

Scan to see Property page.

