

Berger Realty

Since 1926



Berger Realty, Inc.
3160 Asbury Avenue
Ocean City, NJ 08226
1-877-237-4371 / 609-399-0076
info@bergerrealty.com



19 MacArthur, Somers Point, NJ, 08244

Price \$2,799,000.00

PROPERTY DETAILS

Total Rooms	
Bedrooms	0
Baths Full	0
Baths Half	0
Year Built	
Type	
Block Number	1815
Listing #	584607
Taxes	39000.00

COMMENTS

Investor alert! Commercial zoning in a high traffic area! Located on highly traveled MacArthur Blvd heading into Ocean City. Land Fronts MacArthur Blvd, Centre Ave and Dobbs Ave in Somers Point NJ. approximately 4 acres. Visibility and accessibility make this one of the best business locations in Somers Point. Approximate Traffic per day ranges from 15,000 to 50,000 depend...

PROPERTY FEATURES

CONTACT



Ask for Marki Lyn Warlow
Berger Realty Inc
3160 Asbury Avenue, Ocean City
Call:
Email to: mlw@bergerrealty.com

Scan to see Property page.



Berger Realty

Since 1926



Berger Realty, Inc.
3160 Asbury Avenue
Ocean City, NJ 08226
1-877-237-4371 / 609-399-0076
info@bergerrealty.com



19 MacArthur, Somers Point, NJ, 08244

Price \$2,799,000.00

PROPERTY DETAILS

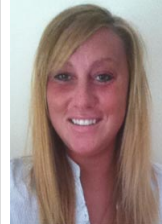
Total Rooms	
Bedrooms	0
Baths Full	0
Baths Half	0
Year Built	
Type	
Block Number	1815
Listing #	584607
Taxes	39000.00

COMMENTS

Investor alert! Commercial zoning in a high traffic area! Located on highly traveled MacArthur Blvd heading into Ocean City. Land Fronts MacArthur Blvd, Centre Ave and Dobbs Ave in Somers Point NJ. approximately 4 acres. Visibility and accessibility make this one of the best business locations in Somers Point. Approximate Traffic per day ranges from 15,000 to 50,000 depend...

PROPERTY FEATURES

CONTACT



Ask for Marki Lyn Warlow
Berger Realty Inc
3160 Asbury Avenue, Ocean City
Call:
Email to: mlw@bergerrealty.com

Scan to see Property page.

