

Berger Realty

Since 1926



Berger Realty, Inc.
3160 Asbury Avenue
Ocean City, NJ 08226
1-877-237-4371 / 609-399-0076
info@bergerrealty.com



10 11th St, 2, Ocean City, NJ, 08226

Price \$595,000.00

PROPERTY DETAILS

Total Rooms	6
Bedrooms	3
Baths Full	1
Baths Half	0
Year Built	
Type	Condo
Block Number	1108
Listing #	584577
Taxes	2586.00



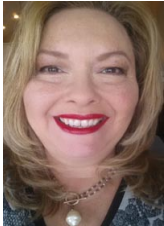
COMMENTS

Located in the heart of Ocean City, this successful VRBO rents fully in the summer and had only one open weekend last year in the off season! This 2nd floor fully renovated condo is clean, bright, pet friendly and within walking distance to shopping, dining, the bay, and beach. Renovated in 2021 to include new kitchen with quartz counters, stainless appliances, gas heat a...

PROPERTY FEATURES

ParkingGarage	Heating	Water	Sewer
None	Forced Air	Public Water	Public Sewer
	Gas-Natural		

CONTACT



Ask for Theresa Maina
Berger Realty Inc
3160 Asbury Avenue, Ocean City
Call: 609-703-7725
Email to: tam@bergerrealty.com

Scan to see Property page.



Berger Realty

Since 1926



Berger Realty, Inc.
3160 Asbury Avenue
Ocean City, NJ 08226
1-877-237-4371 / 609-399-0076
info@bergerrealty.com



10 11th St, 2, Ocean City, NJ, 08226

Price \$595,000.00

PROPERTY DETAILS

Total Rooms	6
Bedrooms	3
Baths Full	1
Baths Half	0
Year Built	
Type	Condo
Block Number	1108
Listing #	584577
Taxes	2586.00



COMMENTS

Located in the heart of Ocean City, this successful VRBO rents fully in the summer and had only one open weekend last year in the off season! This 2nd floor fully renovated condo is clean, bright, pet friendly and within walking distance to shopping, dining, the bay, and beach. Renovated in 2021 to include new kitchen with quartz counters, stainless appliances, gas heat a...

PROPERTY FEATURES

ParkingGarage	Heating	Water	Sewer
None	Forced Air	Public Water	Public Sewer
	Gas-Natural		

CONTACT



Ask for Theresa Maina
Berger Realty Inc
3160 Asbury Avenue, Ocean City
Call: 609-703-7725
Email to: tam@bergerrealty.com

Scan to see Property page.

