

Berger Realty

Since 1926



Berger Realty, Inc.
3160 Asbury Avenue
Ocean City, NJ 08226
1-877-237-4371 / 609-399-0076
info@bergerrealty.com



2107 Rhododendron Ct, 2107, Mays Landing, NJ, 08330

Price \$156,000.00

PROPERTY DETAILS

Total Rooms	7
Bedrooms	3
Baths Full	2
Baths Half	1
Year Built	1985
Type	Condo
Block Number	1135.12
Listing #	584576
Taxes	2233.00

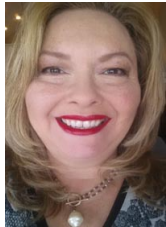
COMMENTS

Come see this 3 bedroom, 2.5 bath condo located in the Woodlands Community in Mays Landing! Walk through the front door into the large living room. Through the living room is the dining room, sitting room and kitchen. Off the kitchen is the laundry/utility room. The second floor offers 3 bedrooms, including the primary en-suite! This unit will not be on the market long. Sc...

PROPERTY FEATURES

ParkingGarage	Heating	Cooling	HotWater
None	Electric	Central	Electric
	Forced Air	Electric	
Water	Sewer		
Public Water	Public Sewer		

CONTACT



Ask for Theresa Maina
Berger Realty Inc
3160 Asbury Avenue, Ocean City
Call: 609-703-7725
Email to: tam@bergerrealty.com

Scan to see Property page.



Berger Realty

Since 1926



Berger Realty, Inc.
3160 Asbury Avenue
Ocean City, NJ 08226
1-877-237-4371 / 609-399-0076
info@bergerrealty.com



2107 Rhododendron Ct, 2107, Mays Landing, NJ, 08330

Price \$156,000.00

PROPERTY DETAILS

Total Rooms	7
Bedrooms	3
Baths Full	2
Baths Half	1
Year Built	1985
Type	Condo
Block Number	1135.12
Listing #	584576
Taxes	2233.00

COMMENTS

Come see this 3 bedroom, 2.5 bath condo located in the Woodlands Community in Mays Landing! Walk through the front door into the large living room. Through the living room is the dining room, sitting room and kitchen. Off the kitchen is the laundry/utility room. The second floor offers 3 bedrooms, including the primary en-suite! This unit will not be on the market long. Sc...

PROPERTY FEATURES

ParkingGarage	Heating	Cooling	HotWater
None	Electric	Central	Electric
	Forced Air	Electric	
Water	Sewer		
Public Water	Public Sewer		

CONTACT



Ask for Theresa Maina
Berger Realty Inc
3160 Asbury Avenue, Ocean City
Call: 609-703-7725
Email to: tam@bergerrealty.com

Scan to see Property page.

