

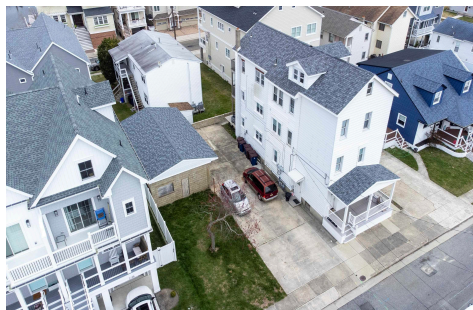


Berger Realty, Inc.
3160 Asbury Avenue
Ocean City, NJ 08226
1-877-237-4371 / 609-399-0076
info@bergerrealty.com



213 Suffolk Ave, Ventnor, NJ, 08406

Price \$299,000.00



PROPERTY DETAILS

Total Rooms	
Bedrooms	0
Baths Full	0
Baths Half	0
Year Built	
Type	
Block Number	199
Listing #	584549
Taxes	2222.00

COMMENTS

Buildable Lot 40 X 80. Currently a 4 car garage sits on site. Build your dream home here! Call today!...

PROPERTY FEATURES

CONTACT



Ask for Patricia (Trish) Spengler
Berger Realty Inc
3160 Asbury Avenue, Ocean City
Call: 609-425-9254
Email to: pjs@bergerrealty.com

Scan to see Property page.



Berger Realty, Inc.
3160 Asbury Avenue
Ocean City, NJ 08226
1-877-237-4371 / 609-399-0076
info@bergerrealty.com



213 Suffolk Ave, Ventnor, NJ, 08406

Price \$299,000.00



PROPERTY DETAILS

Total Rooms	
Bedrooms	0
Baths Full	0
Baths Half	0
Year Built	
Type	
Block Number	199
Listing #	584549
Taxes	2222.00

COMMENTS

Buildable Lot 40 X 80. Currently a 4 car garage sits on site. Build your dream home here! Call today!...

PROPERTY FEATURES

CONTACT



Ask for Patricia (Trish) Spengler
Berger Realty Inc
3160 Asbury Avenue, Ocean City
Call: 609-425-9254
Email to: pjs@bergerrealty.com

Scan to see Property page.

